

High Speed Rail (Crewe – Manchester)

Equality Impact Assessment

Map Book

High Speed Rail (Crewe – Manchester)

Equality Impact Assessment

Map Book



Department
for Transport

High Speed Two (HS2) Limited has been tasked by the Department for Transport (DfT) with managing the delivery of a new national high speed rail network. It is a non-departmental public body wholly owned by the DfT.

High Speed Two (HS2) Limited
Two Snowhill
Snow Hill Queensway
Birmingham B4 6GA

Telephone: 08081 434 434

General email enquiries: HS2enquiries@hs2.org.uk

Website: www.hs2.org.uk

A report prepared for High Speed Two (HS2) Limited:

ARUP+ ERM | FOSTER + PARTNERS | JACOBS
RAMBOLL | TYPESA | COSTAIN

MWJV

Mott MacDonald | WSP

High Speed Two (HS2) Limited has actively considered the needs of blind and partially sighted people in accessing this document. The text will be made available in full on the HS2 website. The text may be freely downloaded and translated by individuals or organisations for conversion into other accessible formats. If you have other needs in this regard, please contact High Speed Two (HS2) Limited.

© High Speed Two (HS2) Limited, 2022, except where otherwise stated.

Copyright in the typographical arrangement rests with High Speed Two (HS2) Limited.

This information is licensed under the Open Government Licence v3.0. To view this licence, visit www.nationalarchives.gov.uk/doc/open-government-licence/version/3 **OGL** or write to the Information Policy Team, The National Archives, Kew, London TW9 4DU, or e-mail: psi@nationalarchives.gsi.gov.uk. Where we have identified any third-party copyright information you will need to obtain permission from the copyright holders concerned.



Printed in Great Britain on paper containing 100% recycled fibre.

Contents

Mapping explanatory notes

Data dictionary and definitions

Map series name	Map series description
EQ-02	LSOAs which fall within the 20% most deprived nationally
EQ-03	Disproportionate representation of people with specific religious or faith groups - Buddhist
EQ-04	Disproportionate representation of people with specific religious or faith groups - Hindu
EQ-05	Disproportionate representation of people with specific religious or faith groups - Jewish
EQ-06	Disproportionate representation of people with specific religious or faith groups - Muslim
EQ-08	Disproportionate representation of age groups – 0 to 15
EQ-09	Disproportionate representation of age groups – 16 to 24
EQ-10	Disproportionate representation of age groups – 65 to 84
EQ-11	Disproportionate representation of age groups – 85+
EQ-12	Disproportionate representation of residents whose activities are limited by a health problem or disability
EQ-14	Disproportionate representation of ethnicity groups - Mixed
EQ-15	Disproportionate representation of ethnicity groups - Asian
EQ-16	Disproportionate representation of ethnicity groups - Black
EQ-17	Disproportionate representation of ethnicity groups - Other
EQ-18	LSOAs with disproportionate representation of three or more protected characteristic groups
EQ-19	Off route work LSOAs with disproportionate representation of protected characteristic groups (Preston and Carlisle)

Mapping explanatory notes

This map book accompanies the Equality Impact Assessment (EQIA) for the High Speed Rail (Crewe – Manchester) hybrid Bill.

Copyright statements

Copyright statements are presented in the Data dictionary and definitions section at the front of the map book, due to limited space to include this on the individual maps themselves.

Ordnance Survey data

All maps produced as part of the ES contain Ordnance Survey (OS) data. HS2 Ltd use the most up to date mapping available, where possible, supplied by the OS and as such, we cannot be held responsible for any inaccuracies within this data. As part of our licence conditions, all digital maps carry a watermark.

Map orientation

The majority of the maps presented in this map book are presented with the railway alignment running horizontally across the page. The direction of travel to London would be following the alignment to the left-hand side of the page, and Manchester to the right.

The exception to this, is map series EQ-19, which presents the alignment running from bottom to top of the page. In this instance, the direction of travel to London would be to the bottom of the page.

Map books

There is one map book which makes up the EQIA. This map book contains all EQIA map series that are listed in the contents. A list of the titles is provided below for reference.

Inset maps are used where there is a high density of smaller lower super output areas (LSOA) features. Coloured borders of black, green and blue identify the extent shown by each inset map. Rail stations are shown on the inset maps as a point of geographical reference.

High Speed Rail (Crewe – Manchester)

Equality Impact Assessment
Data dictionary and definitions

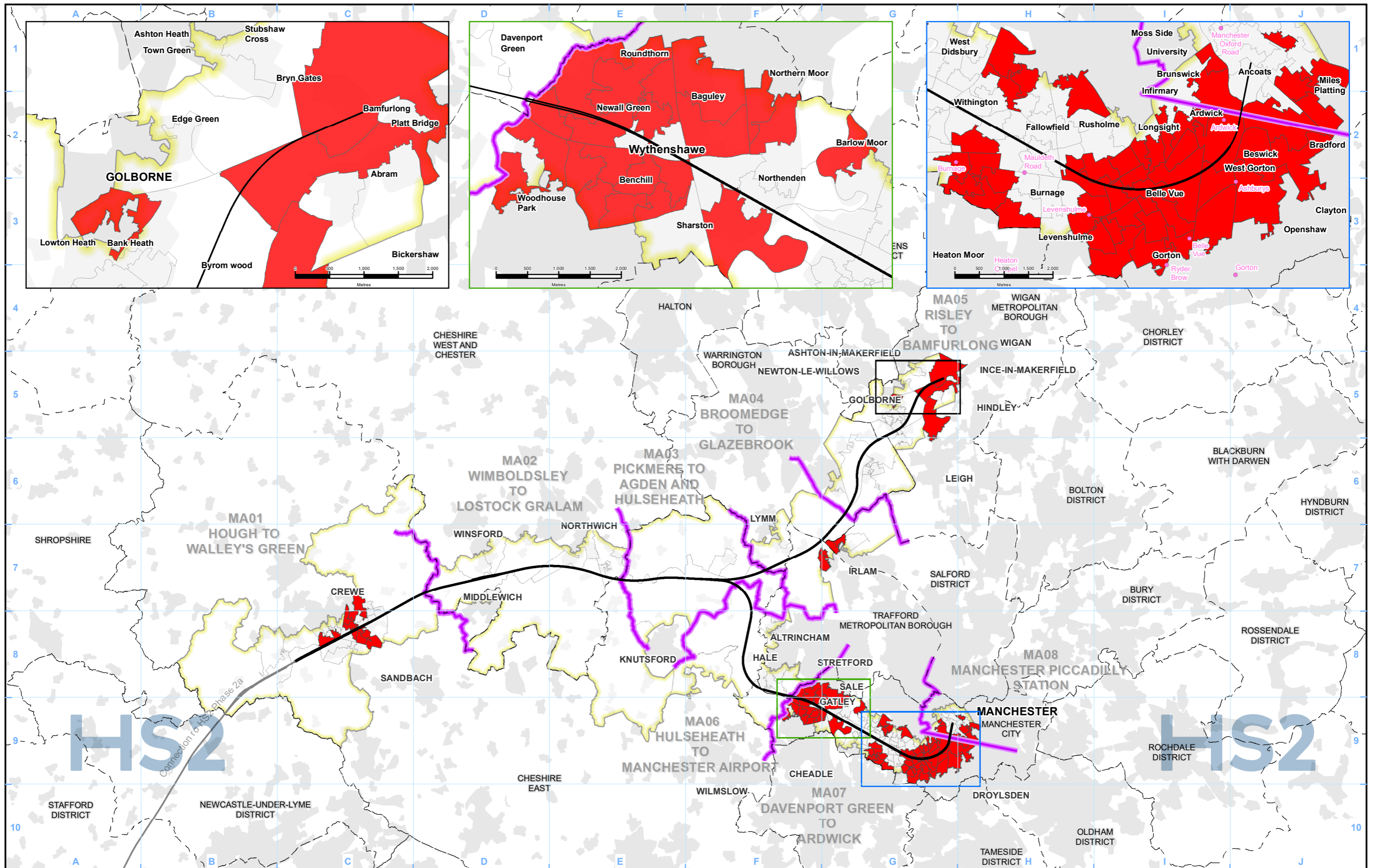
Data dictionary and definitions

Legend features	Definition	Source	Copyright
Baseline Study Area	The extent of the study area made up of Lower Layer Super Output Areas (LSOAs) that intersect a 1km buffer of the HS2 route.	Office for National Statistics	
Community area boundary	The Environmental Statement has been split into eight sections called Community Areas.	High Speed Two (HS2) Ltd	© Crown copyright. Reproduced by permission of Ordnance Survey Licence Number 100049190. Year of Publication 2020.
District/borough boundary	Ordnance Survey local authority boundary mapping.	Ordnance Survey	
LSOAs which fall within the 20% most deprived nationally (IMD)	Lower Layer Super Output Areas falling within the 20% most deprived in England based on the Index of Multiple Deprivation (IMD) (2019) which is the official measure of relative deprivation for small areas (or neighbourhoods) in England.	Ministry of Housing, Communities and Local Government	Contains National Statistics data © Crown copyright and database right 2019. Contains OS data © Crown copyright and database right 2017.
LSOAs with disproportionate representation	Lower Layer Super Output Areas identified as having a disproportionate representation of a particular protected characteristic group (PCG) as indicated in the title of the map.	Office for National Statistics	Contains National Statistics data © Crown copyright and database right 2017. Contains OS data © Crown copyright and database right 2017.
Number of PCGs with disproportionate representation	The number of Protected Characteristic Groups (PCGs) with disproportionate representation in a LSOA. Protected Characteristics are defined in the Equality Act 2010.	High Speed Two (HS2) Ltd	
Phase 2b route	Represents the proposed route of the HS2 Proposed Scheme.	High Speed Two (HS2) Ltd	

High Speed Rail (Crewe – Manchester)

Equality Impact Assessment

LSOAs which fall within the 20% most deprived nationally (IMD) - EQ-02



- Legend**
- Phase 2b route
 - Community area boundary
 - District/Borough boundary
 - Baseline Study Area
 - LSOAs which fall within the 20% most deprived nationally

Map Number	EQ-02-301
Map Name	LSOAs which fall within the 20% most deprived nationally
Crewe to Manchester	

HS2 Ltd accept no responsibility for any circumstances, which arise from the reproduction of this map after alteration, amendment or abbreviation or if it is issued in part or issued incomplete in any way.

Registered in England. Registration number 06791686.
Registered office: 2 Snowhill, Queensway, Birmingham B4 6GA.

© Crown copyright and database rights 2021
OS 100049190190.

Doc Number: 2EV01-ARP-GI-MAP-M000-000201-P02

Scale at A3: 1:250,000

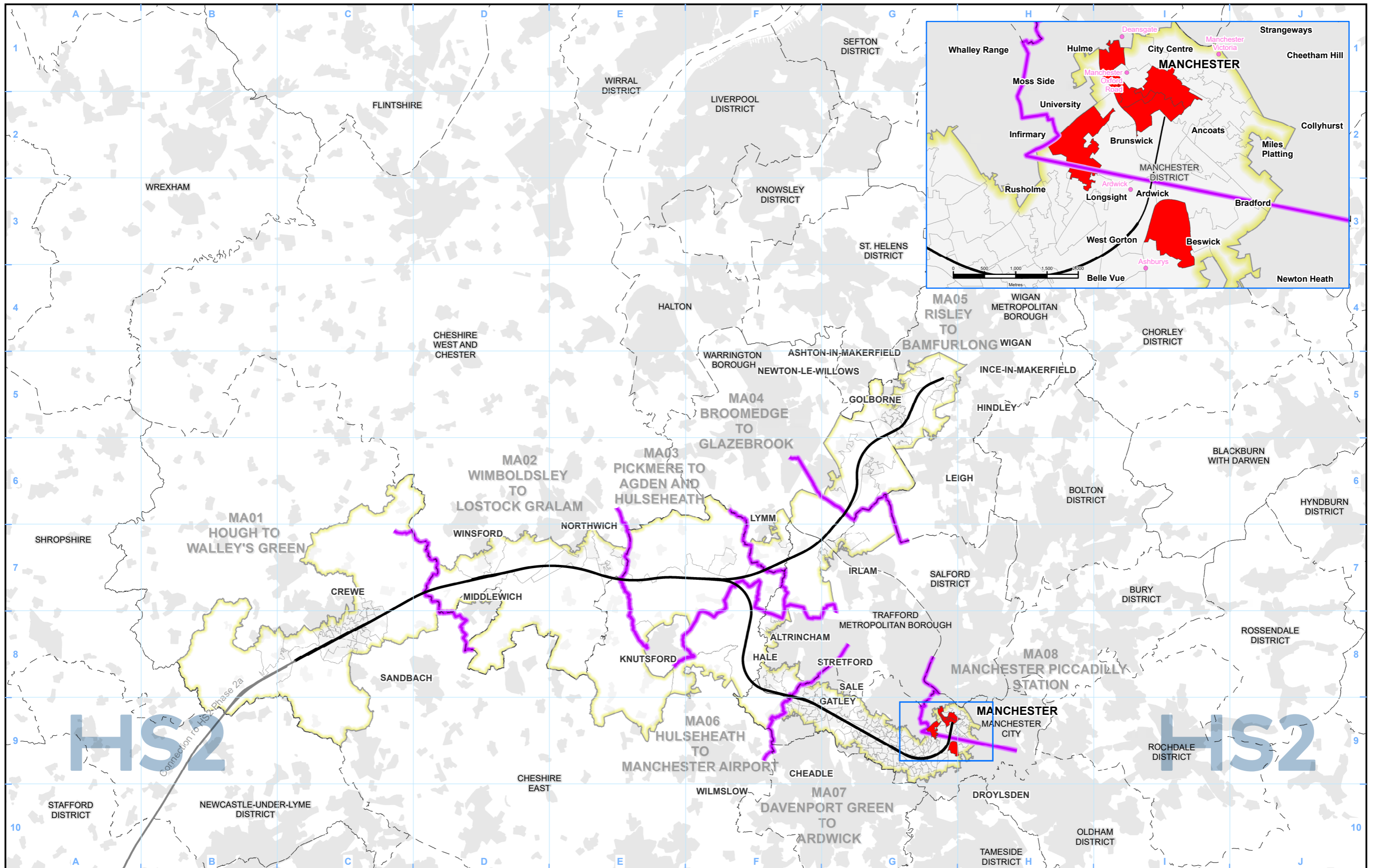
0 2.5 5 7.5 10
Kilometres

Date: 27/04/21

High Speed Rail (Crewe – Manchester)

Equality Impact Assessment

Disproportionate representation of people with specific religions or faith groups - EQ-03, EQ-04, EQ-05, EQ-06



- Legend**
- Phase 2b route
 - Community area boundary
 - District/Borough boundary
 - Baseline Study Area
 - LSOAs with disproportionate representation

Map Number EQ-03-301

Map Name
Disproportionate representation of people with specific religions or faith groups - Buddhist

Crewe to Manchester

HS2

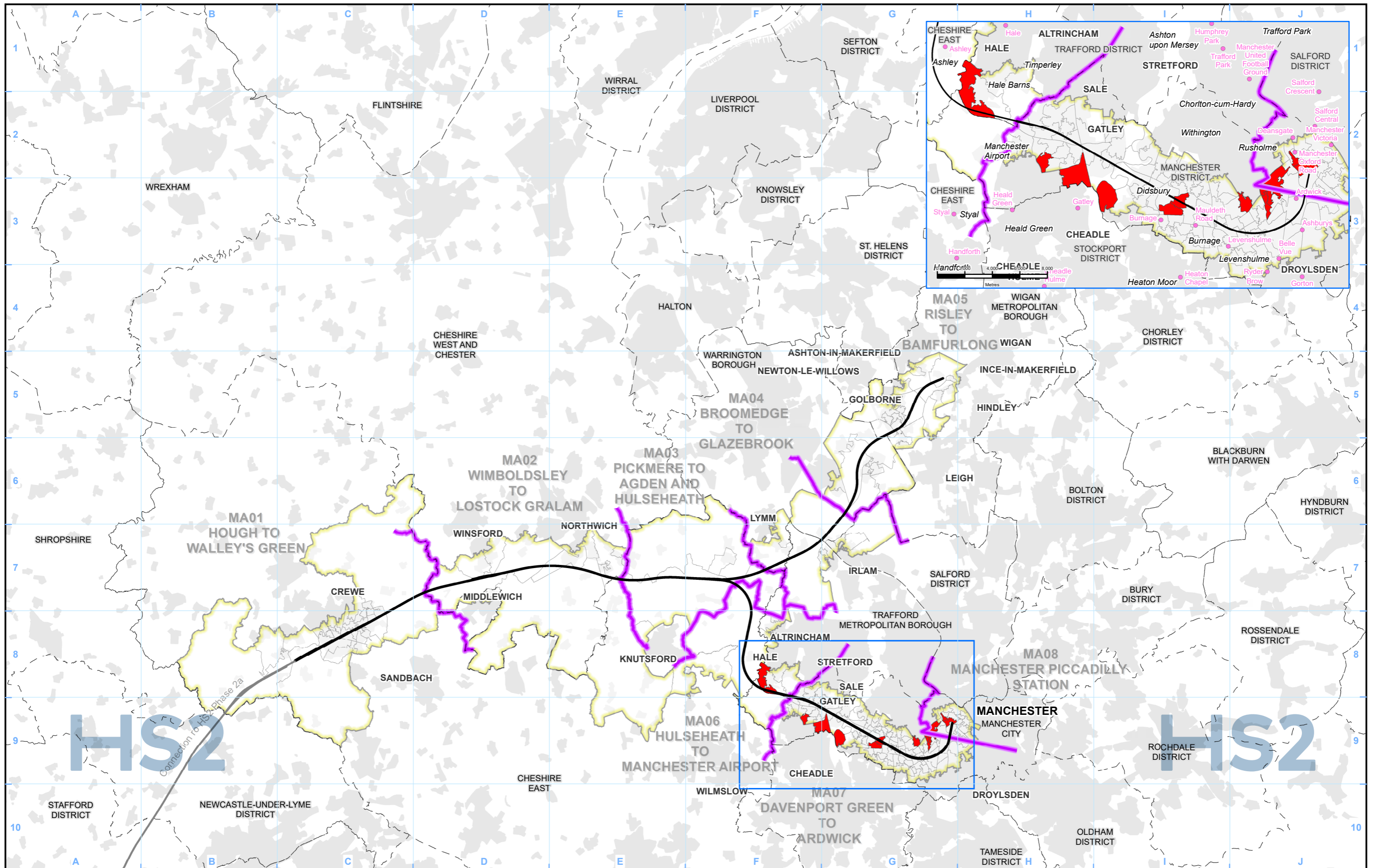
Registered in England. Registration number 06791686.
 Registered office: 2 Snowhill, Queensway, Birmingham B4 6GA.

Scale at A3: 1:250,000

© Crown copyright and database rights 2021
 OS 100049190190.

Doc Number: 2EV01-ARP-GI-MAP-M000-000204-P02

Date: 27/04/21



- Legend**
- Phase 2b route
 - Community area boundary
 - District/Borough boundary
 - Baseline Study Area
 - LSOAs with disproportionate representation

Map Number	EQ-04-301
Map Name	Disproportionate representation of people with specific religions or faith groups - Hindu
Crewe to Manchester	

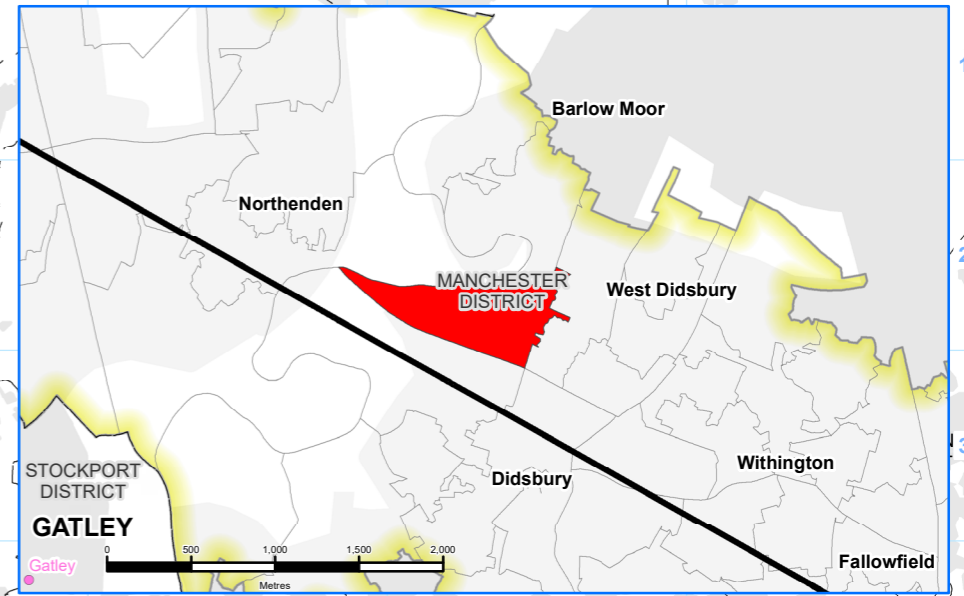
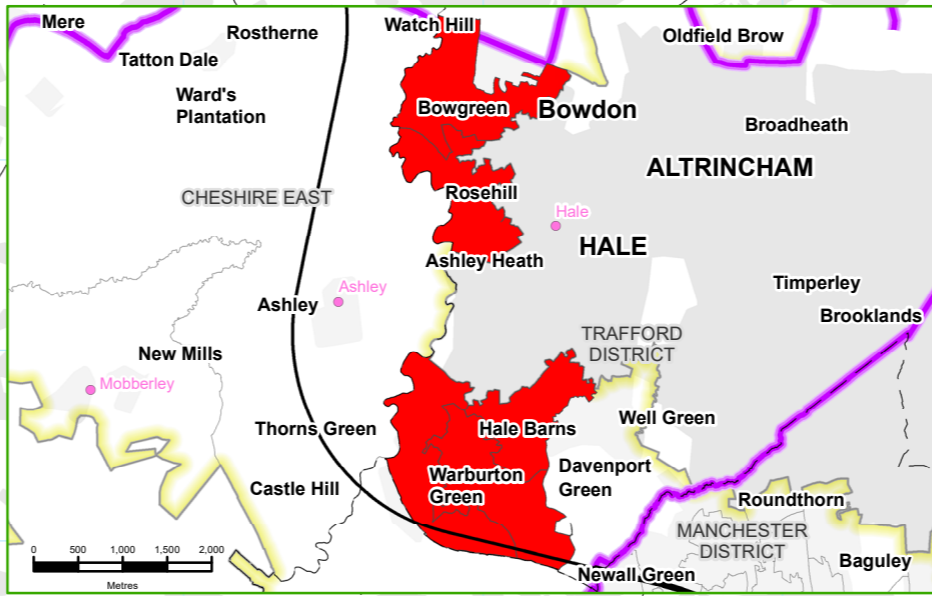
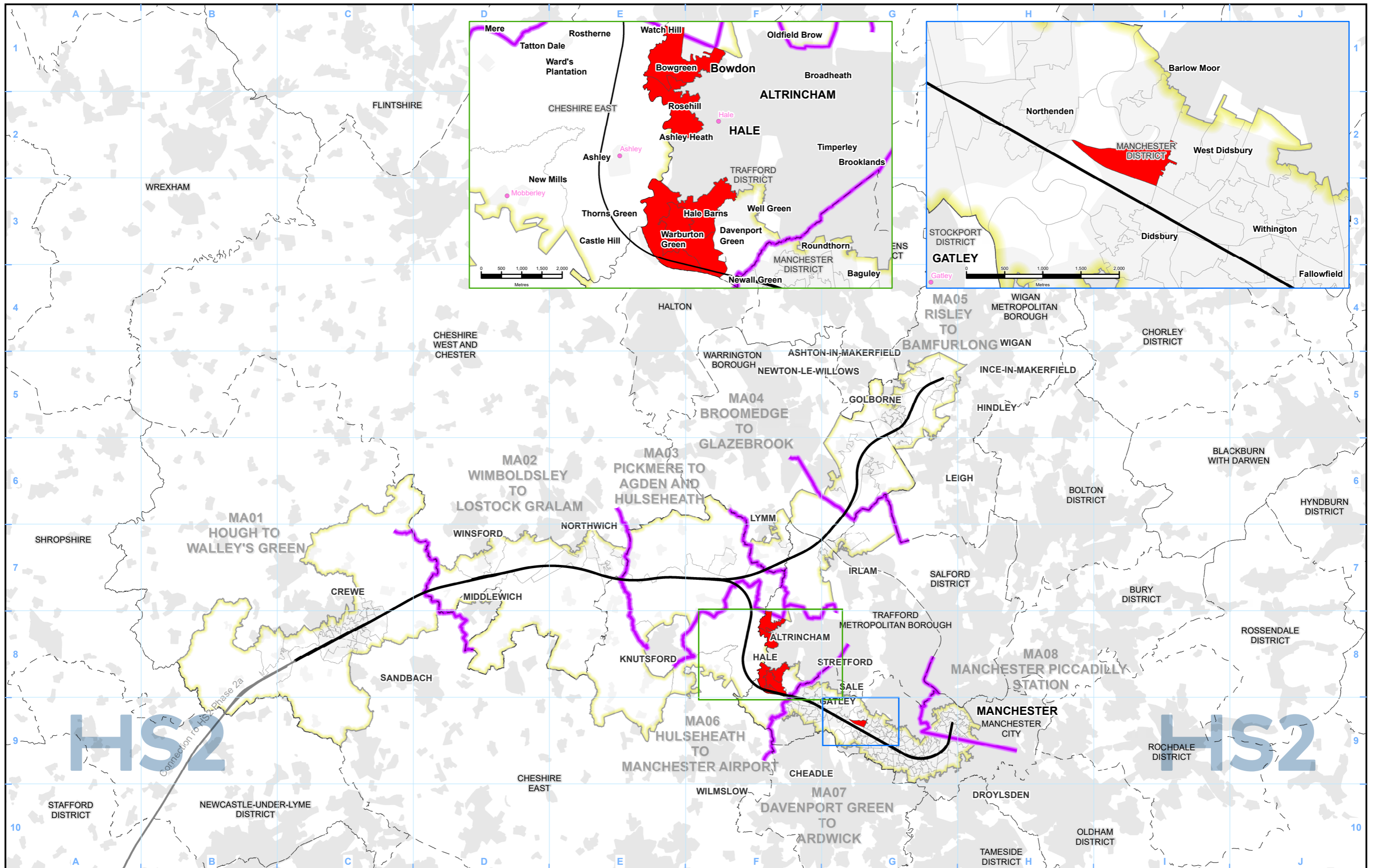
Registered in England. Registration number 06791686.
Registered office: 2 Snowhill, Queensway, Birmingham B4 6GA.

© Crown copyright and database rights 2021
OS 100049190190.

Doc Number: 2EV01-ARP-GI-MAP-M000-000206-P02

Scale at A3: 1:250,000

Date: 27/04/21



- Legend**
- Phase 2b route
 - Community area boundary
 - District/Borough boundary
 - Baseline Study Area
 - LSOAs with disproportionate representation

Map Number EQ-05-301

Map Name
Disproportionate representation of people with specific religions or faith groups - Jewish

Crewe to Manchester

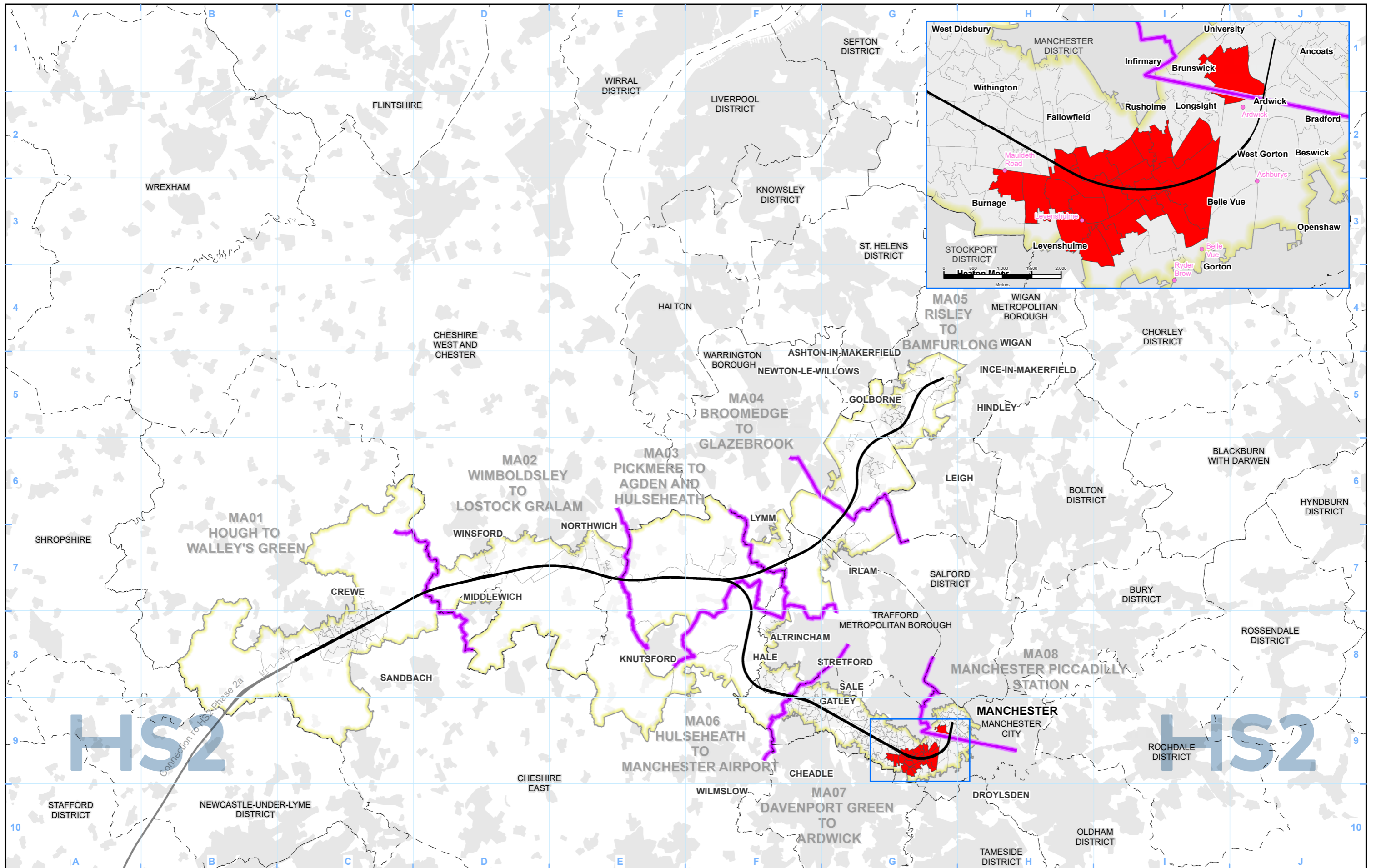
HS2 Ltd accept no responsibility for any circumstances, which arise from the reproduction of this map after alteration, amendment or abbreviation or if it is issued in part or issued incomplete in any way.

Registered in England. Registration number 06791686.
Registered office: 2 Snowhill, Queensway, Birmingham B4 6QA.

Scale at A3: 1:250,000

© Crown copyright and database rights 2021
OS 100049190190.

Doc Number: 2EV01-ARP-GI-MAP-M000-000209-P02 Date: 27/04/21



- Legend**
- Phase 2b route
 - Community area boundary
 - District/Borough boundary
 - Baseline Study Area
 - LSOAs with disproportionate representation

Map Number EQ-06-301

Map Name
Disproportionate representation of people with specific religions or faith groups - Muslim (Islam)

Crewe to Manchester

HS2 Ltd accept no responsibility for any circumstances, which arise from the reproduction of this map after alteration, amendment or abbreviation or if it is issued in part or issued incomplete in any way.

Registered in England. Registration number 06791686.
 Registered office: 2 Snowhill, Queensway, Birmingham B4 6GA.

© Crown copyright and database rights 2021
 OS 100049190190.

Scale at A3: 1:250,000

Kilometres

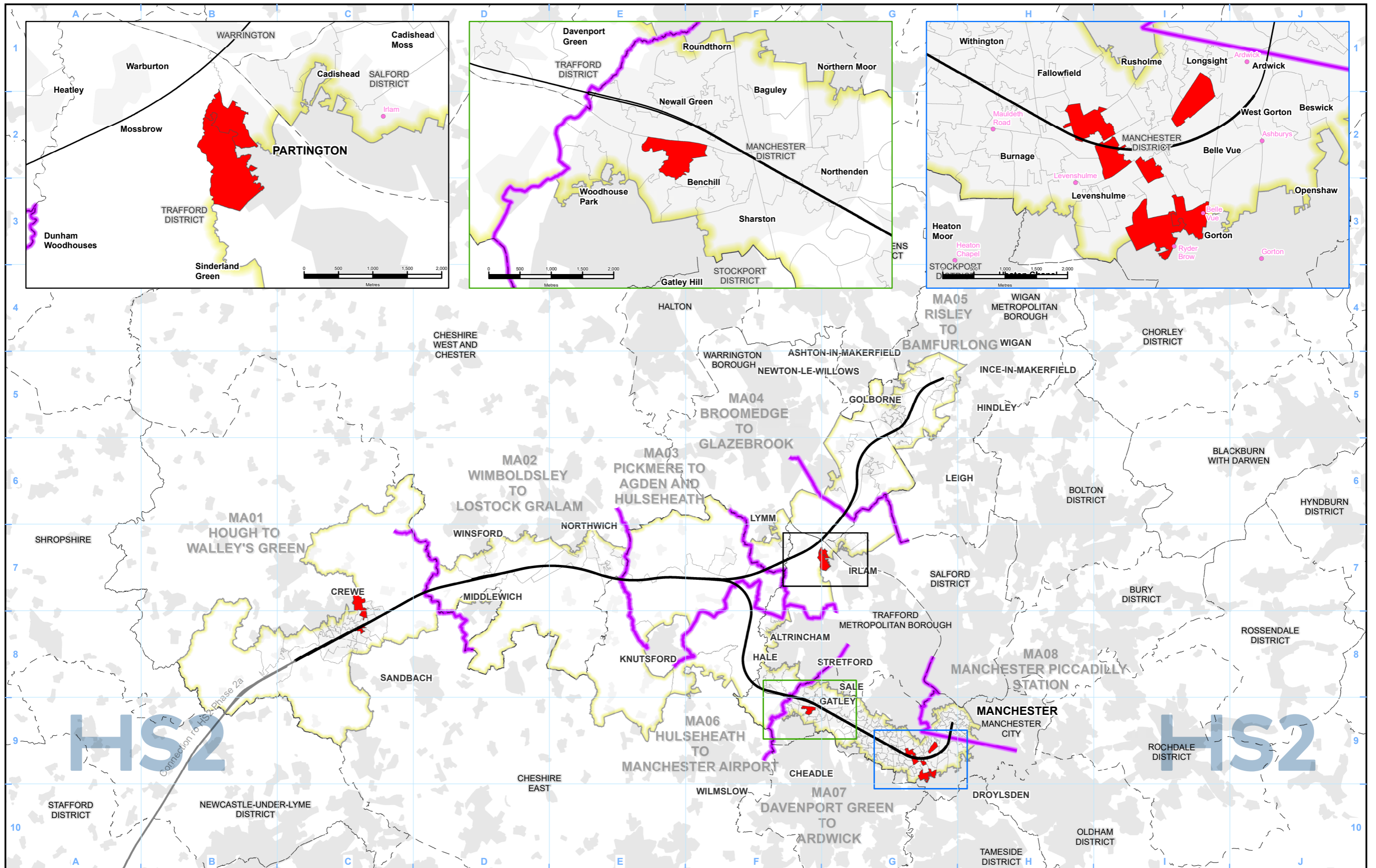
Doc Number: 2EV01-ARP-GI-MAP-M000-000210-P02 Date: 27/04/21

This page is intentionally blank

High Speed Rail (Crewe – Manchester)

Equality Impact Assessment

Disproportionate representation of age groups -
EQ-08, EQ-09, EQ-10, EQ-11



- Legend**
- Phase 2b route
 - Community area boundary
 - District/Borough boundary
 - Baseline Study Area
 - LSOAs with disproportionate representation

Map Number	EQ-08-301
Map Name	Disproportionate representation of age groups - 0 to 15
Crewe to Manchester	

Registered in England. Registration number 06791686.
Registered office: 2 Snowhill, Queensway, Birmingham B4 6QA.

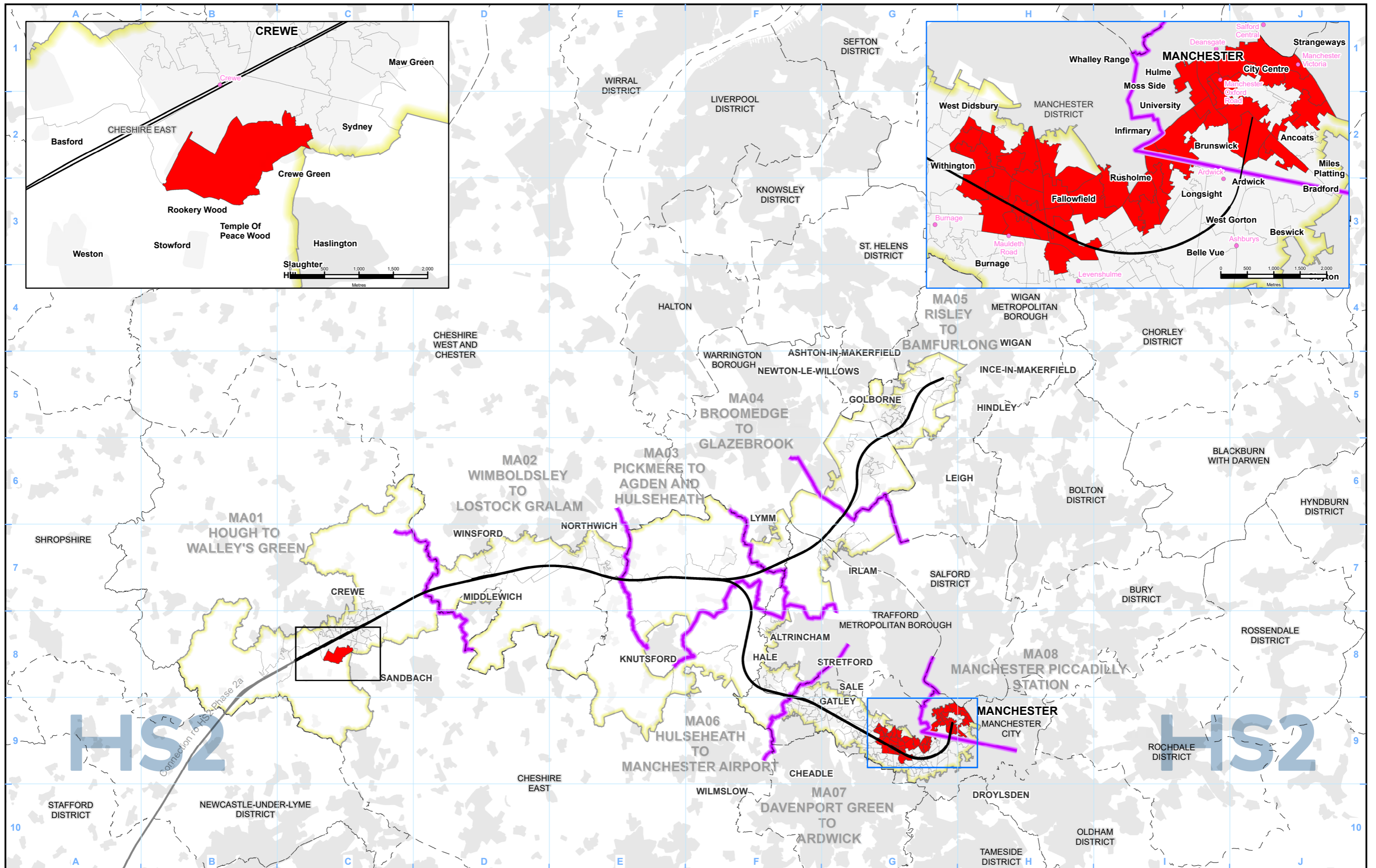
© Crown copyright and database rights 2021
OS 100049190190.

Doc Number: 2EV01-ARP-GI-MAP-M000-000213-P02

Scale at A3: 1:250,000

0 2.5 5 7.5 10
Kilometres

Date: 27/04/21



- Legend**
- Phase 2b route
 - Community area boundary
 - District/Borough boundary
 - Baseline Study Area
 - LSOAs with disproportionate representation

Map Number EQ-09-301

Map Name Disproportionate representation of age groups - 16 to 24

Crewe to Manchester

HS2

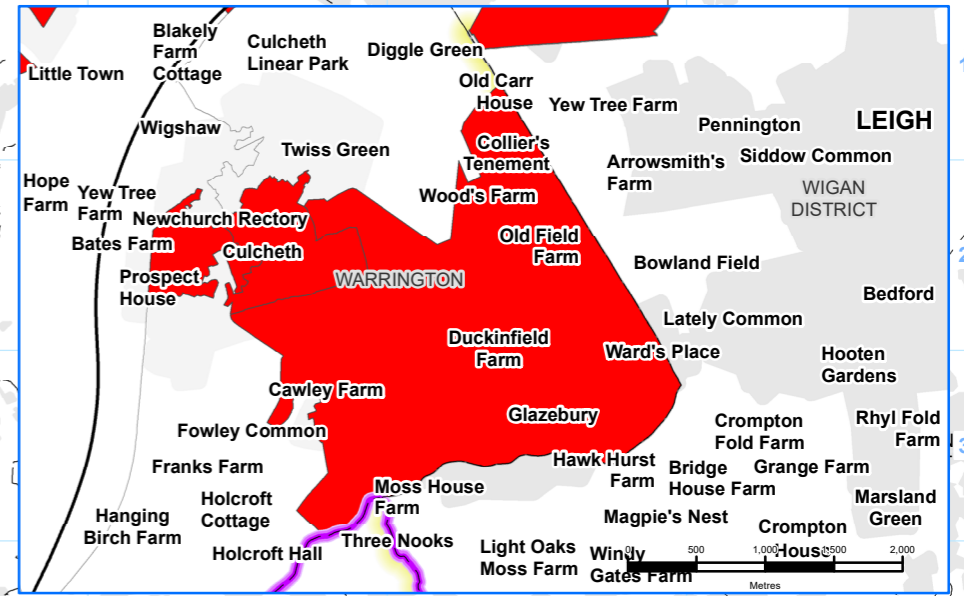
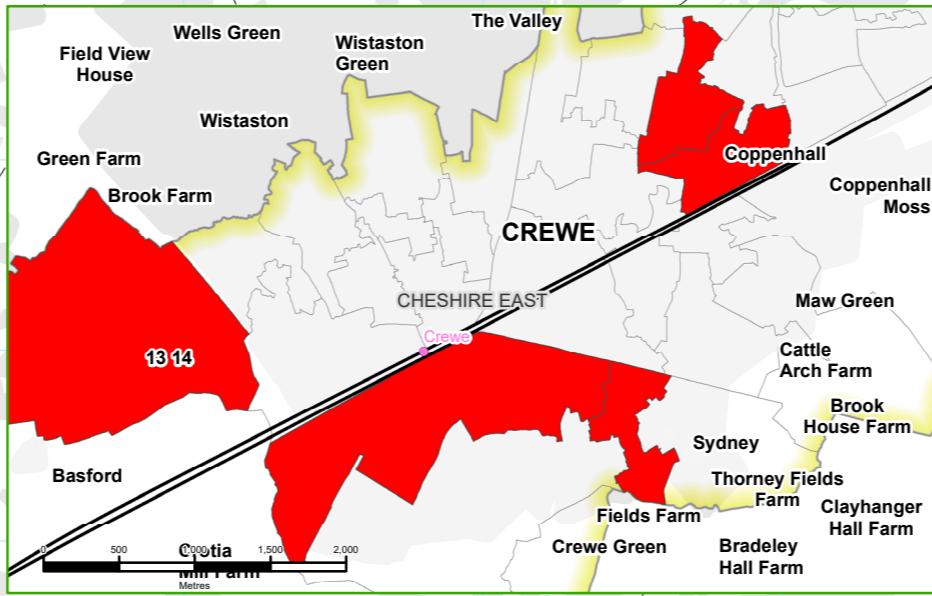
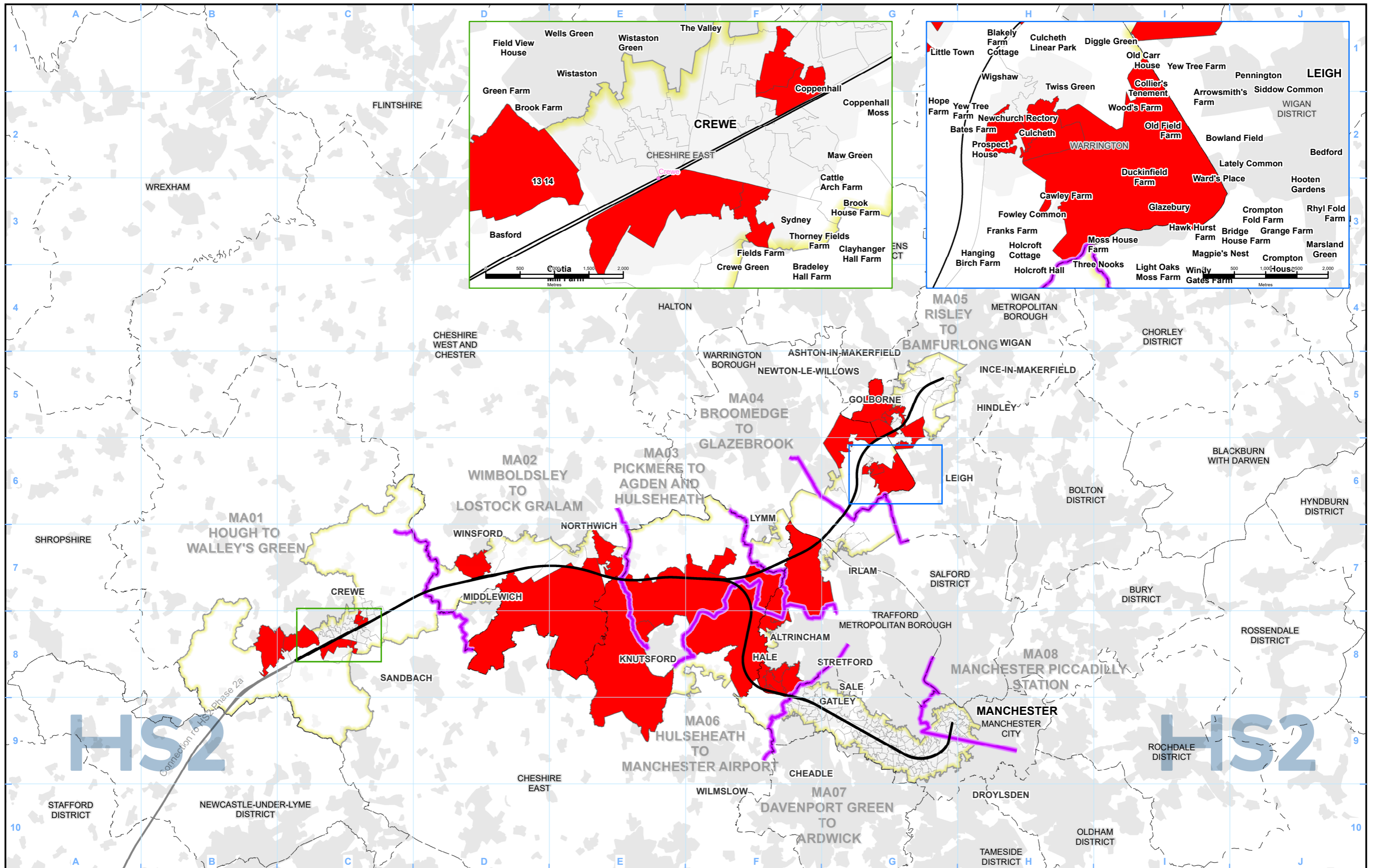
Registered in England. Registration number 06791686.
Registered office: 2 Snowhill, Queensway, Birmingham B4 6QA.

Scale at A3: 1:250,000

© Crown copyright and database rights 2021 OS 100049190190.

Doc Number: 2EV01-ARP-GI-MAP-M000-000216-P02

Date: 27/04/21



- Legend**
- Phase 2b route
 - Community area boundary
 - District/Borough boundary
 - Baseline Study Area
 - LSOAs with disproportionate representation

Map Number EQ-10-301

Map Name Disproportionate representation of age groups - 65 to 84

Crewe to Manchester

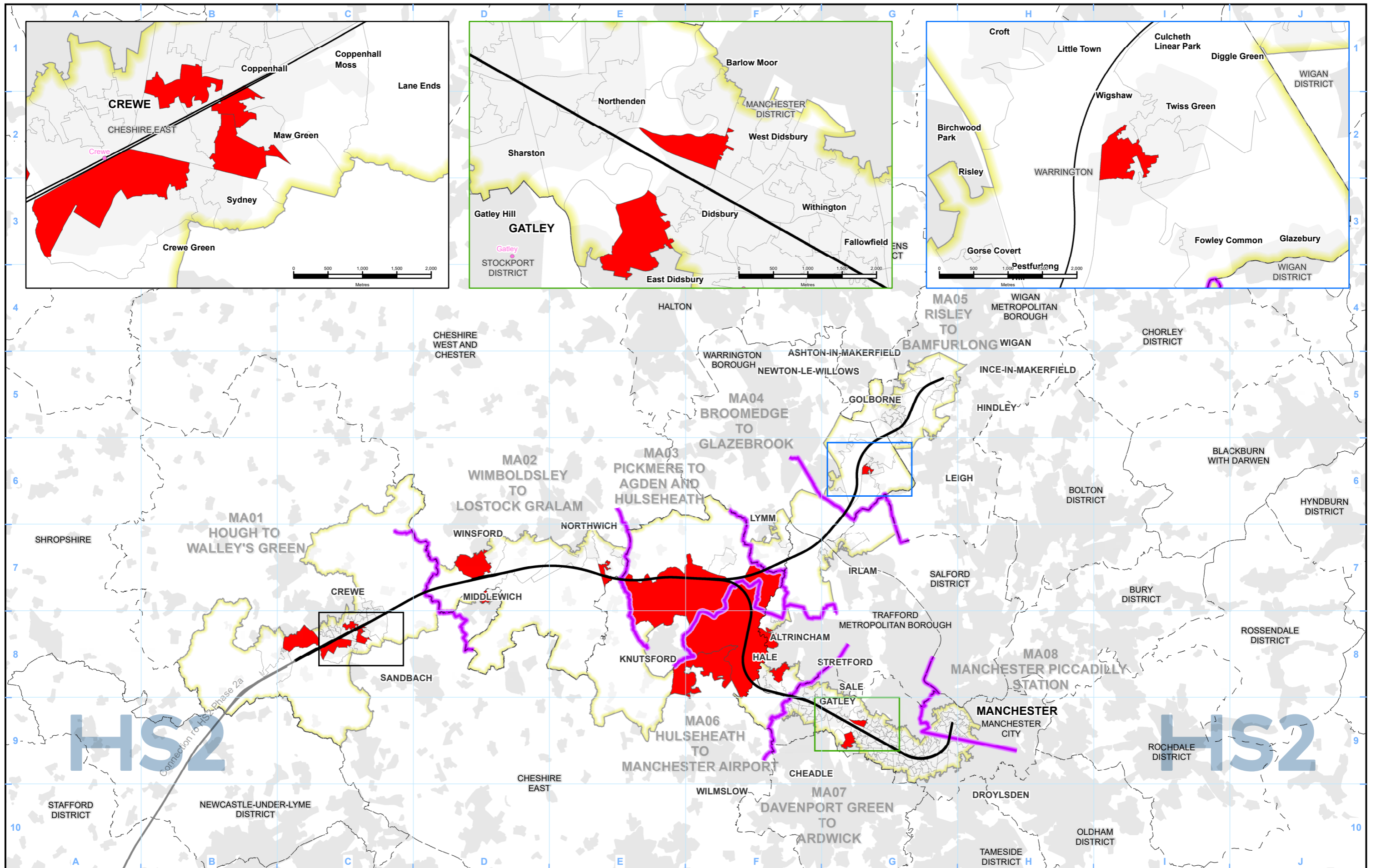
HS2 Ltd accept no responsibility for any circumstances, which arise from the reproduction of this map after alteration, amendment or abbreviation or if it is issued in part or issued incomplete in any way.

Registered in England. Registration number 06791686.
Registered office: 2 Snowhill, Queensway, Birmingham B4 6QA.

© Crown copyright and database rights 2021
OS 100049190190.

Scale at A3: 1:250,000

Doc Number: 2EV01-ARP-GI-MAP-M000-000219-P02 Date: 27/04/21



- Legend**
- Phase 2b route
 - Community area boundary
 - District/Borough boundary
 - Baseline Study Area
 - LSOAs with disproportionate representation

Map Number	EQ-11-301
Map Name	Disproportionate representation of age groups- 85+
Crewe to Manchester	

Registered in England. Registration number 06791686.
Registered office: 2 Snowhill, Queensway,
Birmingham B4 6GA.

© Crown copyright and database rights 2021
OS 100049190190.

Doc Number: 2EV01-ARP-GI-MAP-M000-000222-P02

Scale at A3: 1:250,000

Kilometres

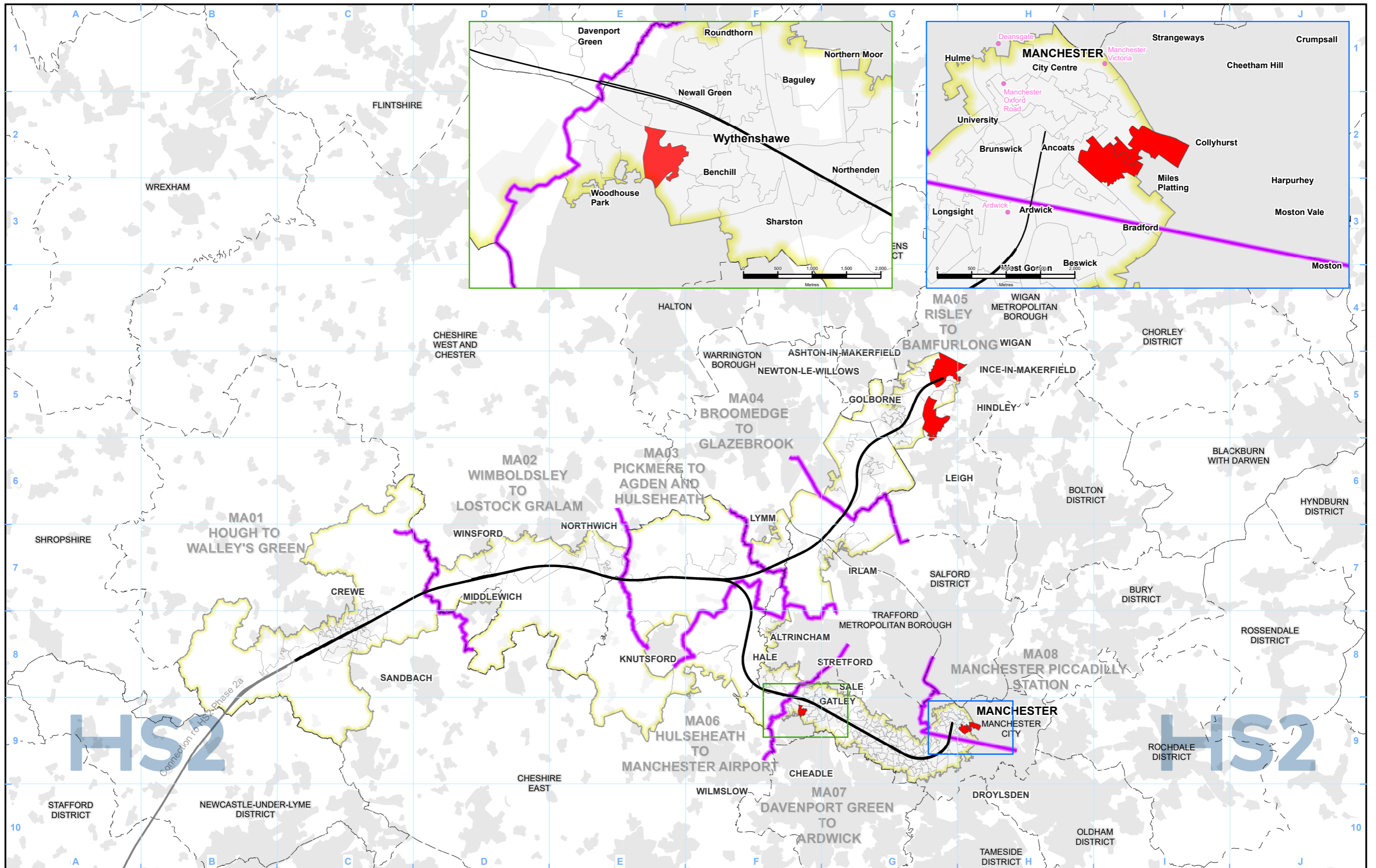
Date: 27/04/21

This page is intentionally blank

High Speed Rail (Crewe – Manchester)

Equality Impact Assessment

Disproportionate representation of residents whose activities are limited 'a lot' by a health problem or disability - EQ-12



- Legend**
- Phase 2b route
 - Community area boundary
 - District/Borough boundary
 - Baseline Study Area
 - LSOAs with disproportionate representation

Map Number	EQ-12-301
Map Name	Disproportionate representation of residents whose activities are limited 'a lot' by a health problem or disability
Crewe to Manchester	

Registered in England. Registration number 06791686.
Registered office: 2 Snowhill, Queensway,
Birmingham B4 6GA.

© Crown copyright and database rights 2021
OS 100049190190.

Doc Number: 2EV01-ARP-GI-MAP-M000-000225-P02

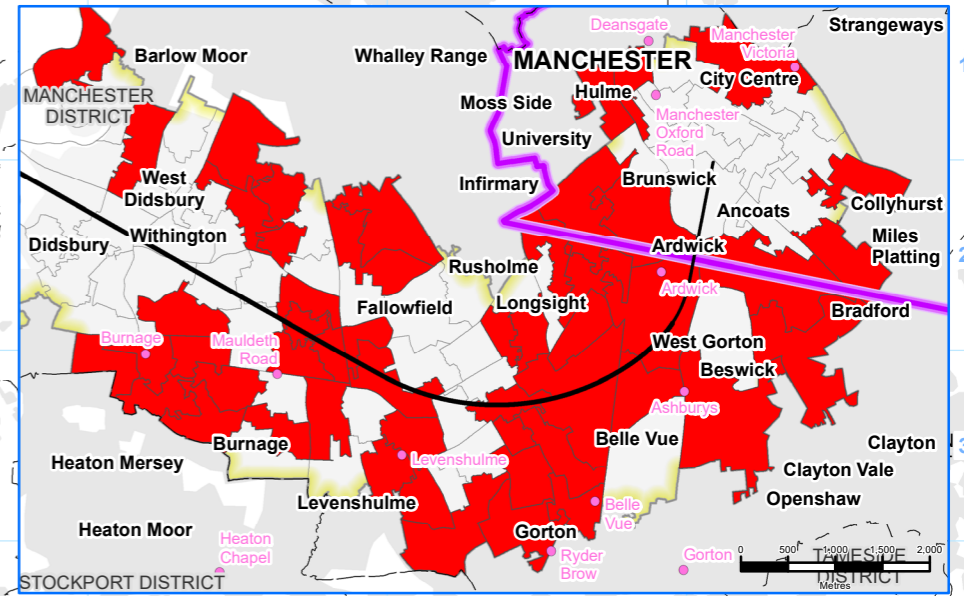
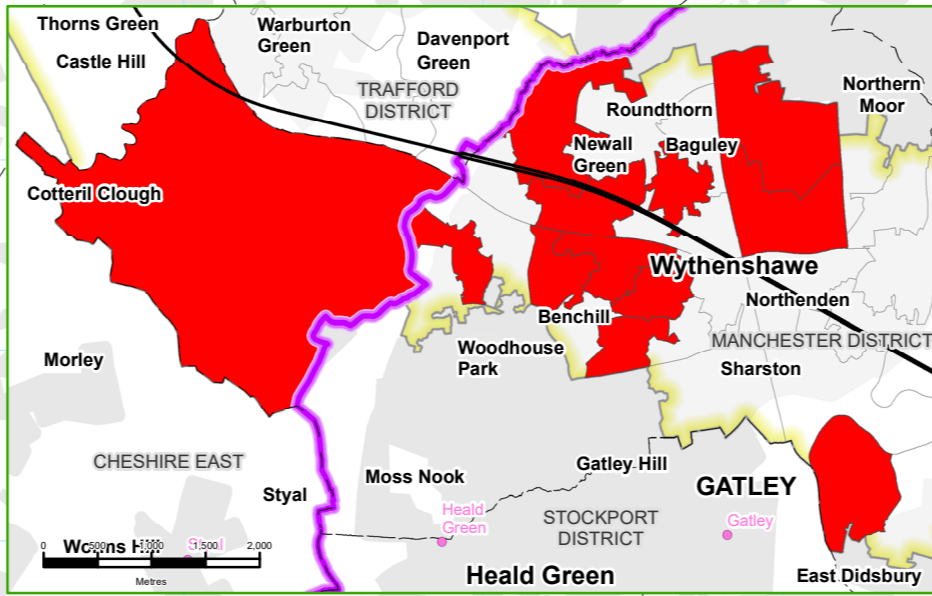
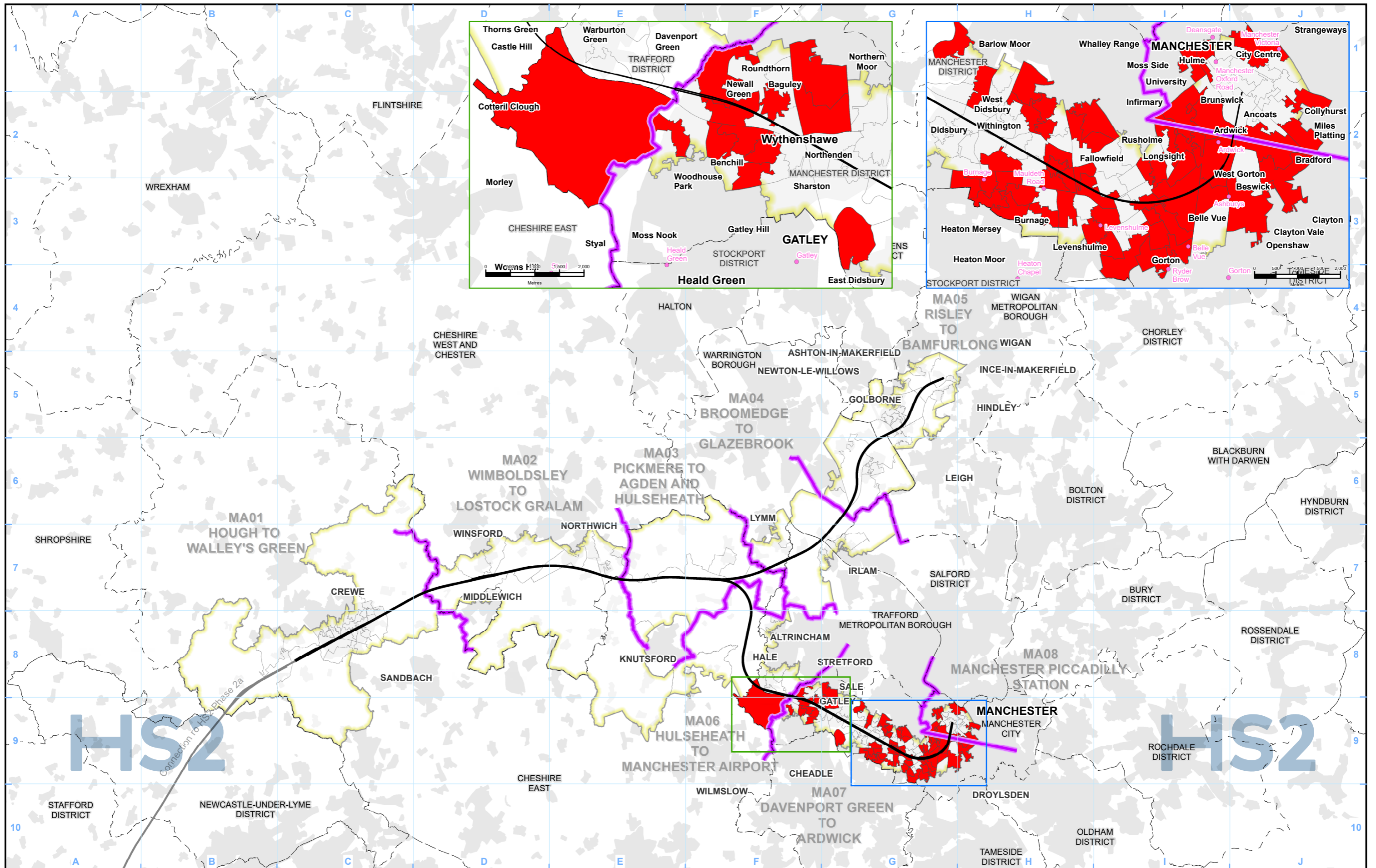
Scale at A3: 1:250,000

Date: 27/04/21

High Speed Rail (Crewe – Manchester)

Equality Impact Assessment

Disproportionate representation of ethnicity groups -
EQ-14, EQ-15, EQ-16, EQ-17



- Legend**
- Phase 2b route
 - Community area boundary
 - District/Borough boundary
 - Baseline Study Area
 - LSOAs with disproportionate representation

Map Number EQ-14-301

Map Name Disproportionate representation of ethnicity groups - Mixed

HS2

Registered in England. Registration number 06791686.
Registered office: 2 Snowhill, Queensway, Birmingham B4 6GA.

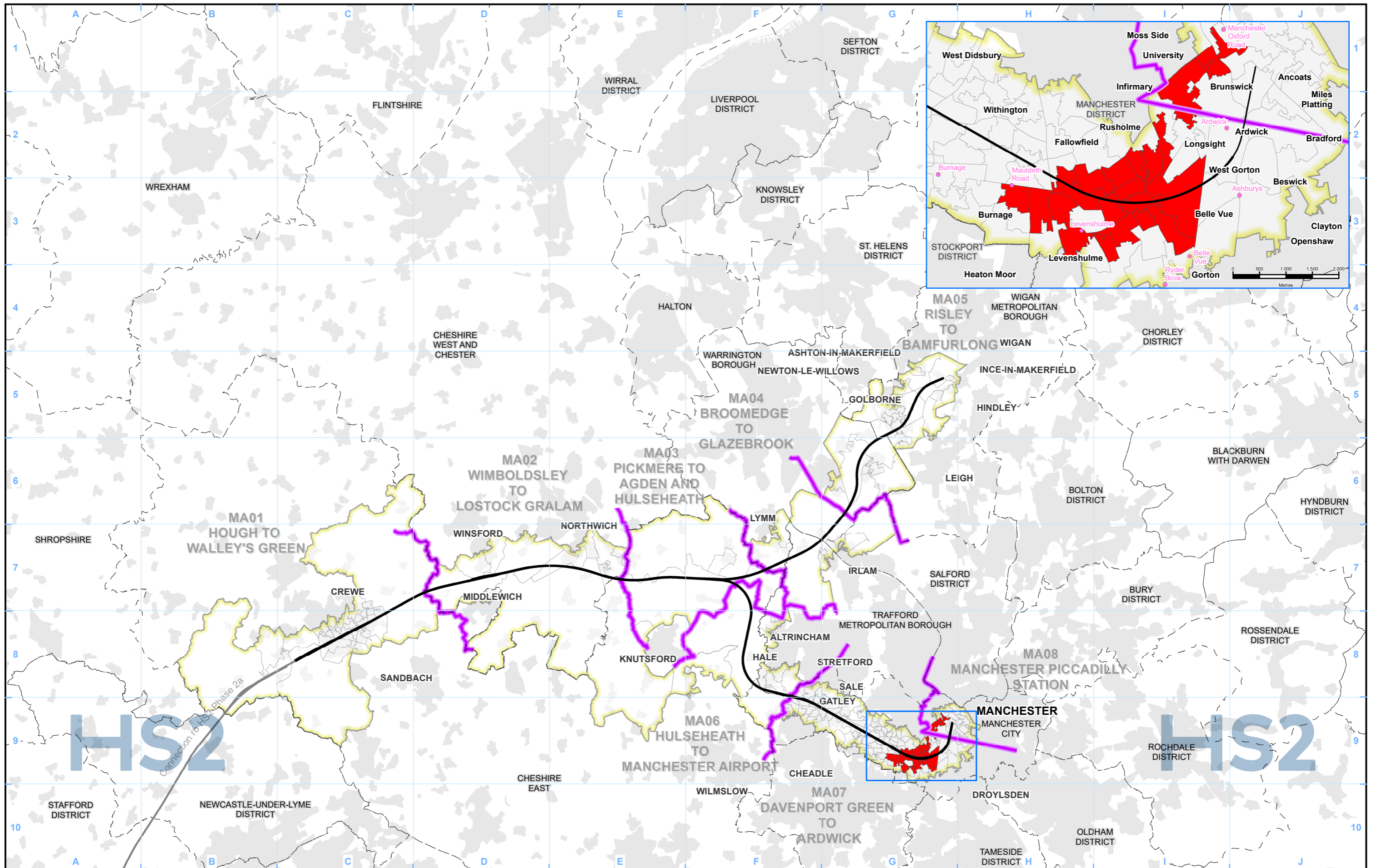
Scale at A3: 1:250,000

© Crown copyright and database rights 2021
OS 100049190190.

Doc Number: 2EV01-ARP-GI-MAP-M000-000229-P02

Date: 27/04/21

Crewe to Manchester



- Legend**
- Phase 2b route
 - Community area boundary
 - District/Borough boundary
 - Baseline Study Area
 - LSOAs with disproportionate representation

Map Number	EQ-15-301
Map Name	Disproportionate representation of ethnicity groups - Asian
Crewe to Manchester	

HS2

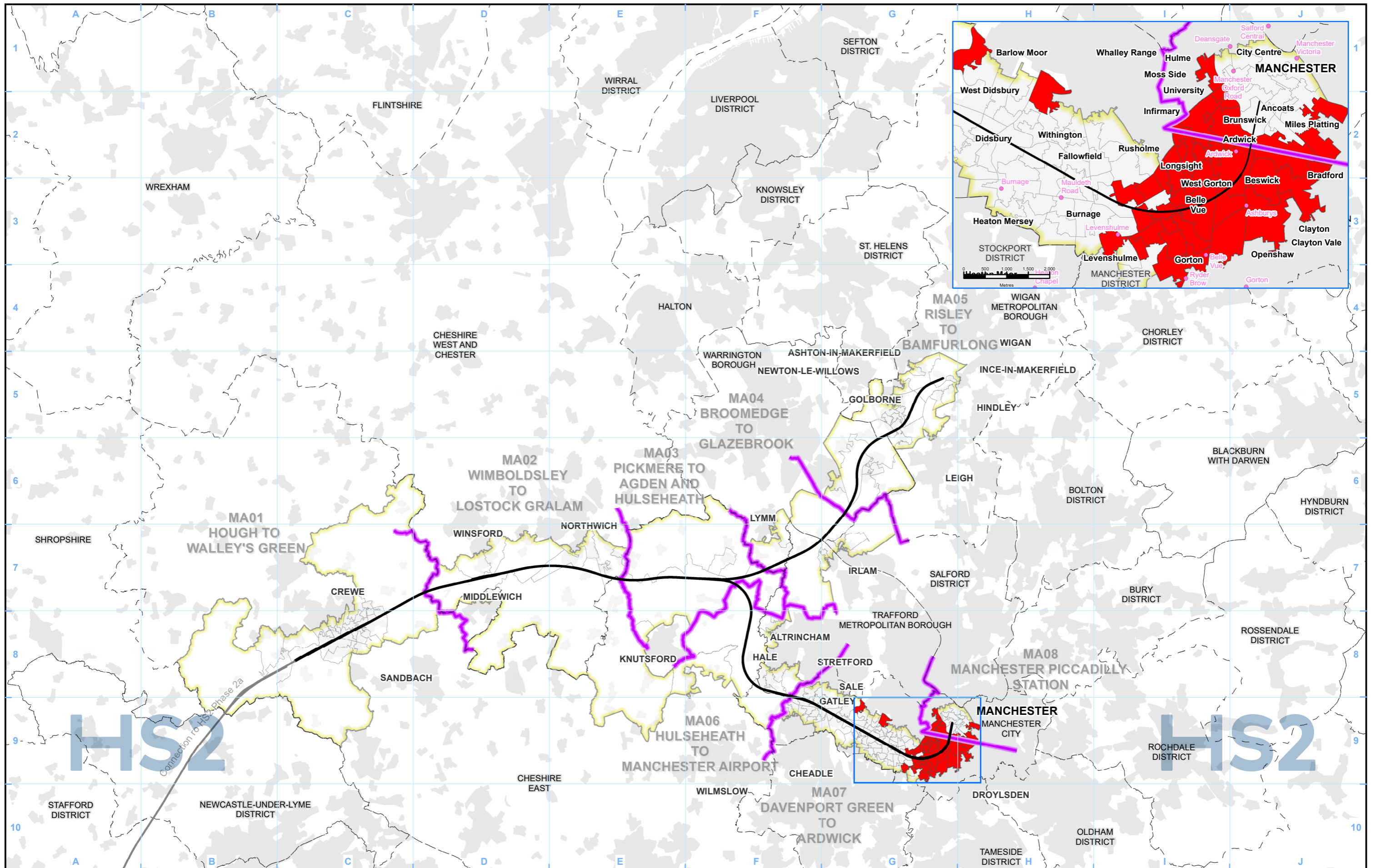
Registered in England. Registration number 06791686.
Registered office: 2 Snowhill, Queensway, Birmingham B4 6QA.

Scale at A3: 1:250,000

© Crown copyright and database rights 2021
OS 100049190190.

Doc Number: 2EV01-ARP-GI-MAP-M000-000232-P02

Date: 27/04/21



- Legend**
- Phase 2b route
 - Community area boundary
 - District/Borough boundary
 - Baseline Study Area
 - LSOAs with disproportionate representation

Map Number	EQ-16-301
Map Name	Disproportionate representation of ethnicity groups - Black
Crewe to Manchester	

HS2 Ltd accept no responsibility for any circumstances, which arise from the reproduction of this map after alteration, amendment or abbreviation or if it is issued in part or issued incomplete in any way.

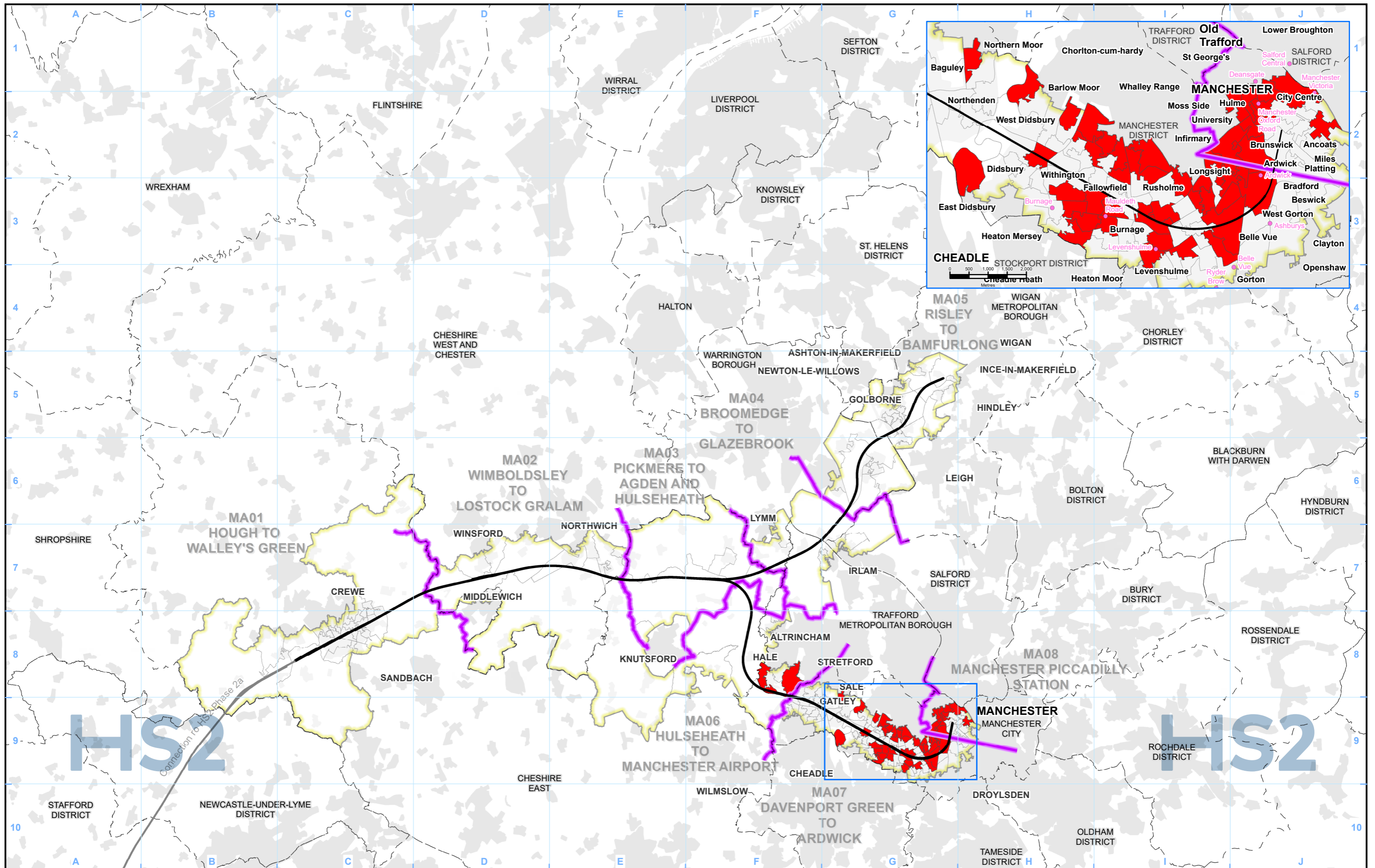
Registered in England. Registration number 06791686.
Registered office: 2 Snowhill, Queensway, Birmingham B4 6QA.

© Crown copyright and database rights 2021
OS 100049190190.

Doc Number: 2EV01-ARP-GI-MAP-M000-000234-P02

Scale at A3: 1:250,000

Date: 27/04/21



- Legend**
- Phase 2b route
 - Community area boundary
 - - - District/Borough boundary
 - Baseline Study Area
 - LSOAs with disproportionate representation

Map Number EQ-17-301

Map Name
Disproportionate representation of ethnic groups - Other

Crewe to Manchester

HS2

Registered in England. Registration number 06791686.
 Registered office: 2 Snowhill, Queensway,
 Birmingham B4 6GA.

© Crown copyright and database rights 2021
 OS 100049190190.

Doc Number: 2EV01-ARP-GI-MAP-M000-000237-P02

Scale at A3: 1:250,000

0 2.5 5 7.5 10
 Kilometres

Date: 27/04/21

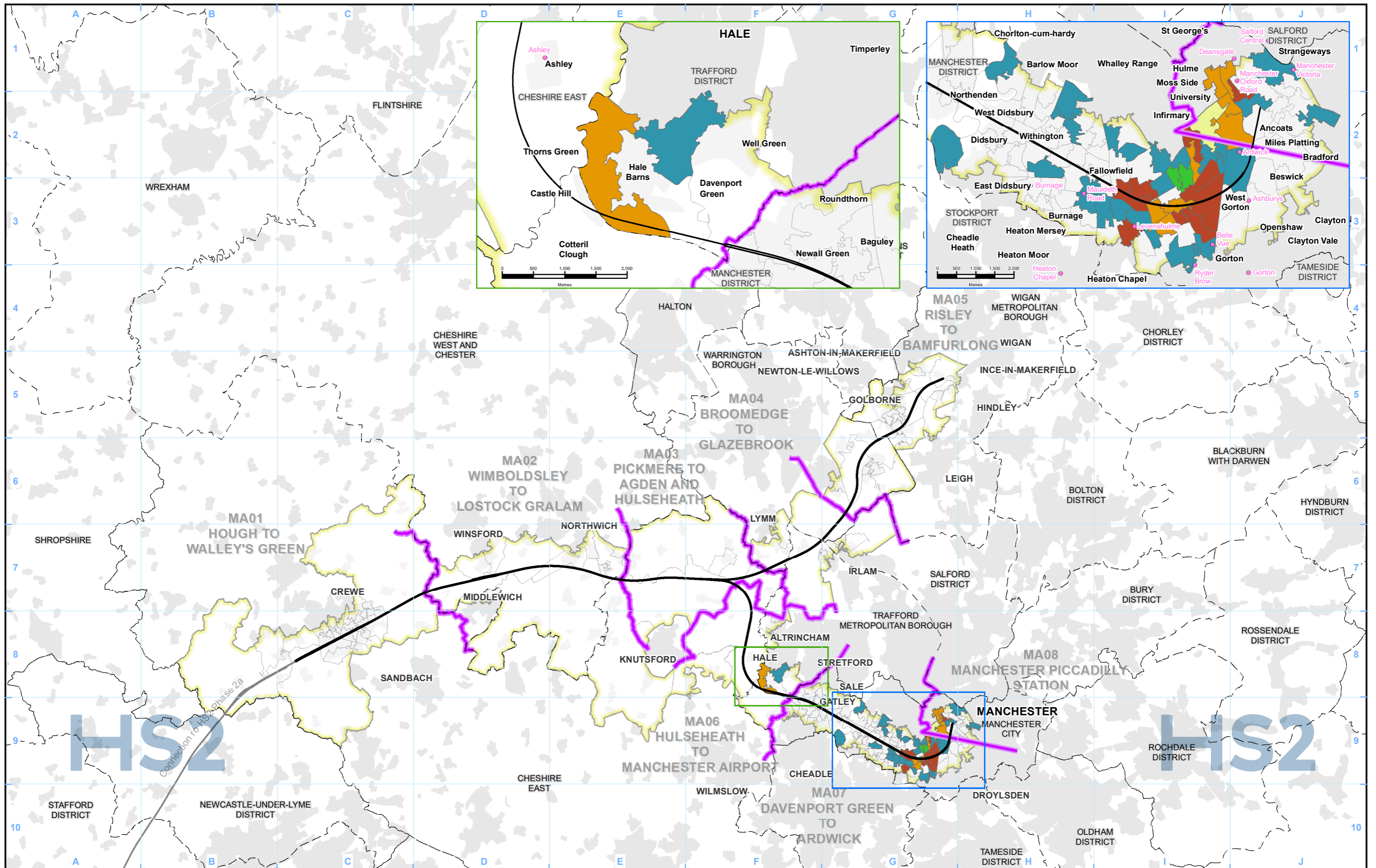
HS2 Ltd accept no responsibility for any circumstances, which arise from the reproduction of this map after alteration, amendment or abbreviation or if it is issued in part or issued incomplete in any way.

This page is intentionally blank

High Speed Rail (Crewe – Manchester)

Equality Impact Assessment

LSOAs with disproportionate representation of three or more
Protected Characteristic Groups (PCGs) - EQ-18



Legend	
	Phase 2b route
	Community area boundary
	District/Borough boundary
	Baseline Study Area
	Number of PCGs with disproportionate representation: 3
	4
	5
	6
	7

Map Number: EQ-18-301

Map Name: LSOAs with disproportionate representation of three or more protected characteristic groups

Crewe to Manchester

HS2

Registered in England. Registration number 06791686.
Registered office: 2 Snowhill, Queensway, Birmingham B4 6GA.

Scale at A3: 1:250,000

© Crown copyright and database rights 2021
OS 100049190190.

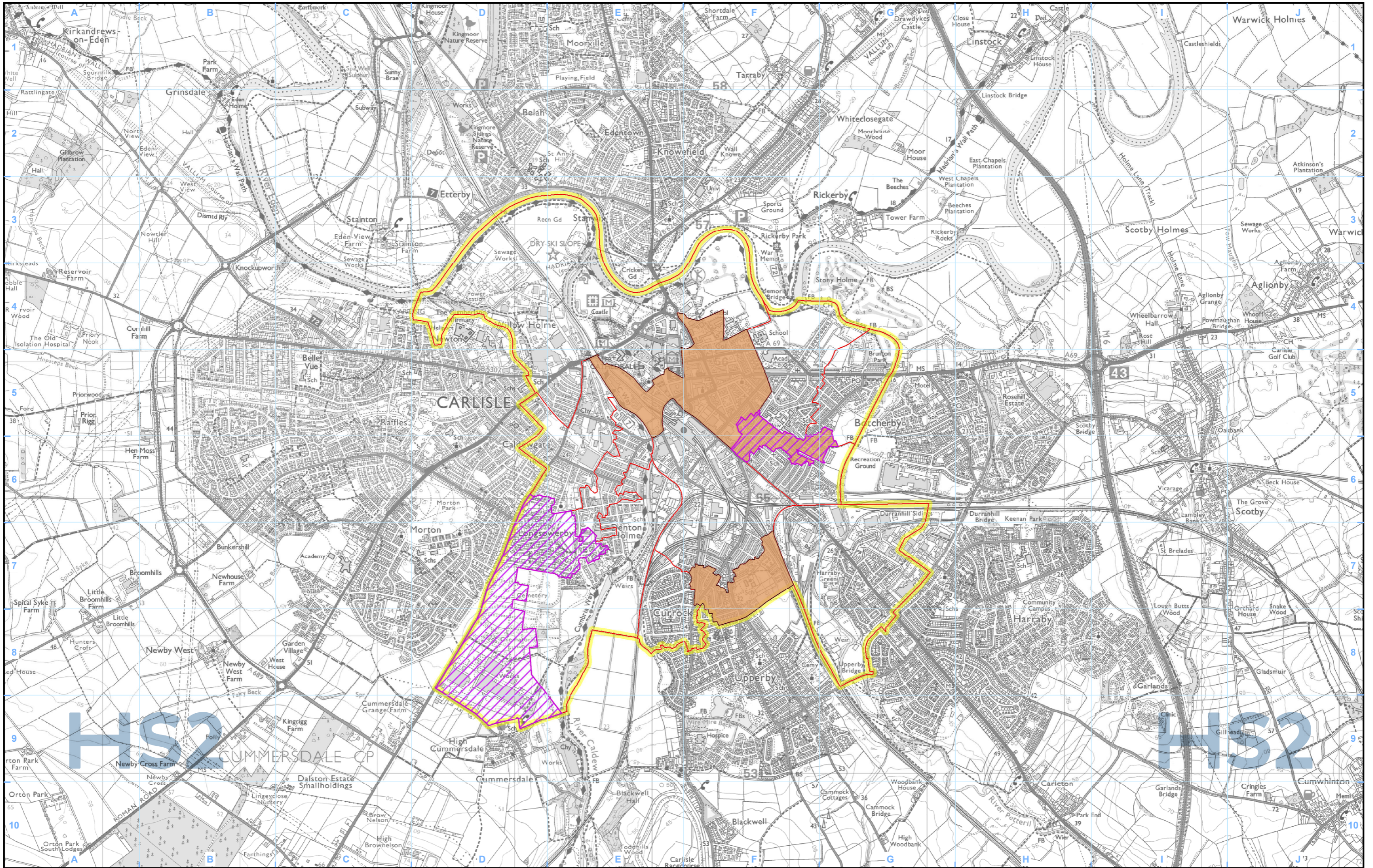
Doc Number: 2EV01-ARP-GI-MAP-M000-000239-P02

Date: 27/04/21

High Speed Rail (Crewe – Manchester)

Equality Impact Assessment

LSOAs with disproportionate representation of
Protected Characteristic Groups - EQ-19



- Legend**
- Baseline Study Area
 - LSOAs within study area
 - LSOAs which fall within the 20% most deprived nationally (IMD)
 - Disproportionate representation of age groups - 85+

Map Number	EQ-19-302
Map Name	LSOAs with disproportionate representation of Protected Characteristic Groups
	Off route works: Carlisle

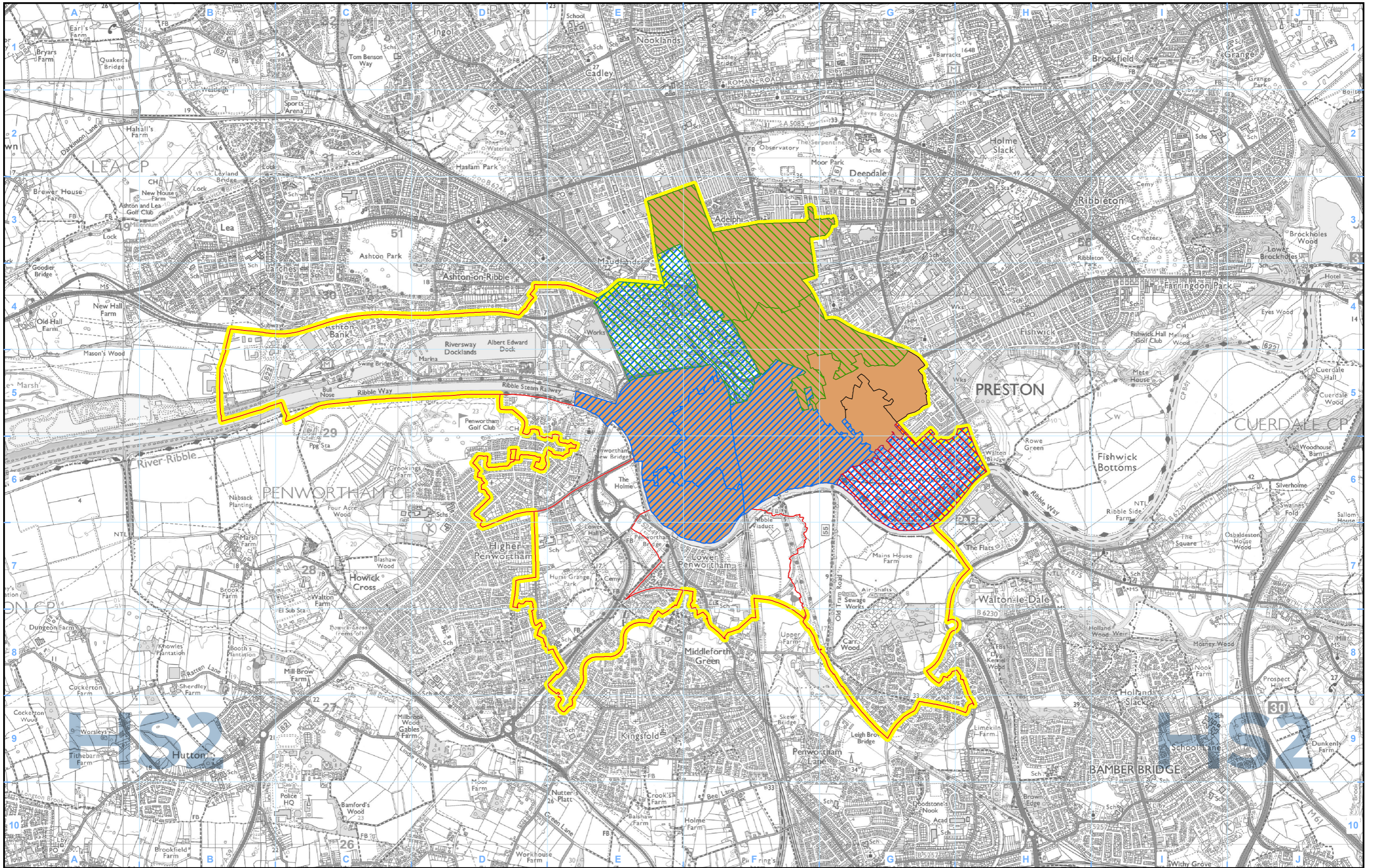
Registered in England. Registration number 06791686.
Registered office: 2 Snowhill, Queensway,
Birmingham B4 6GA.

© Crown copyright and database rights 2021
OS 100049190190.

Doc Number: 2EV01-ARP-GI-MAP-M000-000257-P02

Scale at A3: 1:25,000

Date: 27/04/21



Legend

- Baseline Study Area
- LSOAs within study area
- LSOAs which fall within the 20% most deprived nationally (IMD)
- Disproportionate representation of people with specific religions or faith groups - Hindu
- Disproportionate representation of people with specific religions or faith groups - Muslim
- Disproportionate representation of age groups - 16 to 24

Map Number	EQ-19-303
Map Name	LSOAs with disproportionate representation of Protected Characteristic Groups
Off route works:	Preston

Registered in England. Registration number 06791686.
Registered office: 2 Snowhill, Queensway,
Birmingham B4 6GA.

© Crown copyright and database rights 2021
OS 100049190190.

Doc Number: 2EV01-ARP-GI-MAP-000-000256-P02

Scale at A3: 1:25,000

Date: 06/05/21

HS2 Ltd accept no responsibility for any circumstances, which arise from the reproduction of this map after alteration, amendment or abbreviation or if it is issued in part or issued incomplete in any way.

This page is intentionally blank