

High Speed Rail (Crewe – Manchester)

Supplementary Environmental Statement 1 and Additional Provision 1 Environmental Statement

Volume 5: Map Book

Land quality (LQ-01)

High Speed Rail (Crewe – Manchester)

Supplementary Environmental Statement 1 and Additional Provision 1 Environmental Statement

Volume 5: Map Book

Land quality (LQ-01)



Department
for Transport

High Speed Two (HS2) Limited has been tasked by the Department for Transport (DfT) with managing the delivery of a new national high speed rail network. It is a non-departmental public body wholly owned by the DfT.

High Speed Two (HS2) Limited
Two Snowhill
Snow Hill Queensway
Birmingham B4 6GA

Telephone: 08081 434 434

General email enquiries: HS2enquiries@hs2.org.uk

Website: www.hs2.org.uk

A report prepared for High Speed Two (HS2) Limited:

ARUP+ ERM | FOSTER + PARTNERS | JACOBS
RAMBOLL | TYPESA | COSTAIN

MWJV

Mott MacDonald | WSP

High Speed Two (HS2) Limited has actively considered the needs of blind and partially sighted people in accessing this document. The text will be made available in full on the HS2 website. The text may be freely downloaded and translated by individuals or organisations for conversion into other accessible formats. If you have other needs in this regard, please contact High Speed Two (HS2) Limited.

© High Speed Two (HS2) Limited, 2022, except where otherwise stated.

Copyright in the typographical arrangement rests with High Speed Two (HS2) Limited.

This information is licensed under the Open Government Licence v3.0. To view this licence, visit www.nationalarchives.gov.uk/doc/open-government-licence/version/3 **OGL** or write to the Information Policy Team, The National Archives, Kew, London TW9 4DU, or e-mail: psi@nationalarchives.gsi.gov.uk. Where we have identified any third-party copyright information you will need to obtain permission from the copyright holders concerned.



Printed in Great Britain on paper containing 100% recycled fibre.

Contents

Mapping explanatory notes

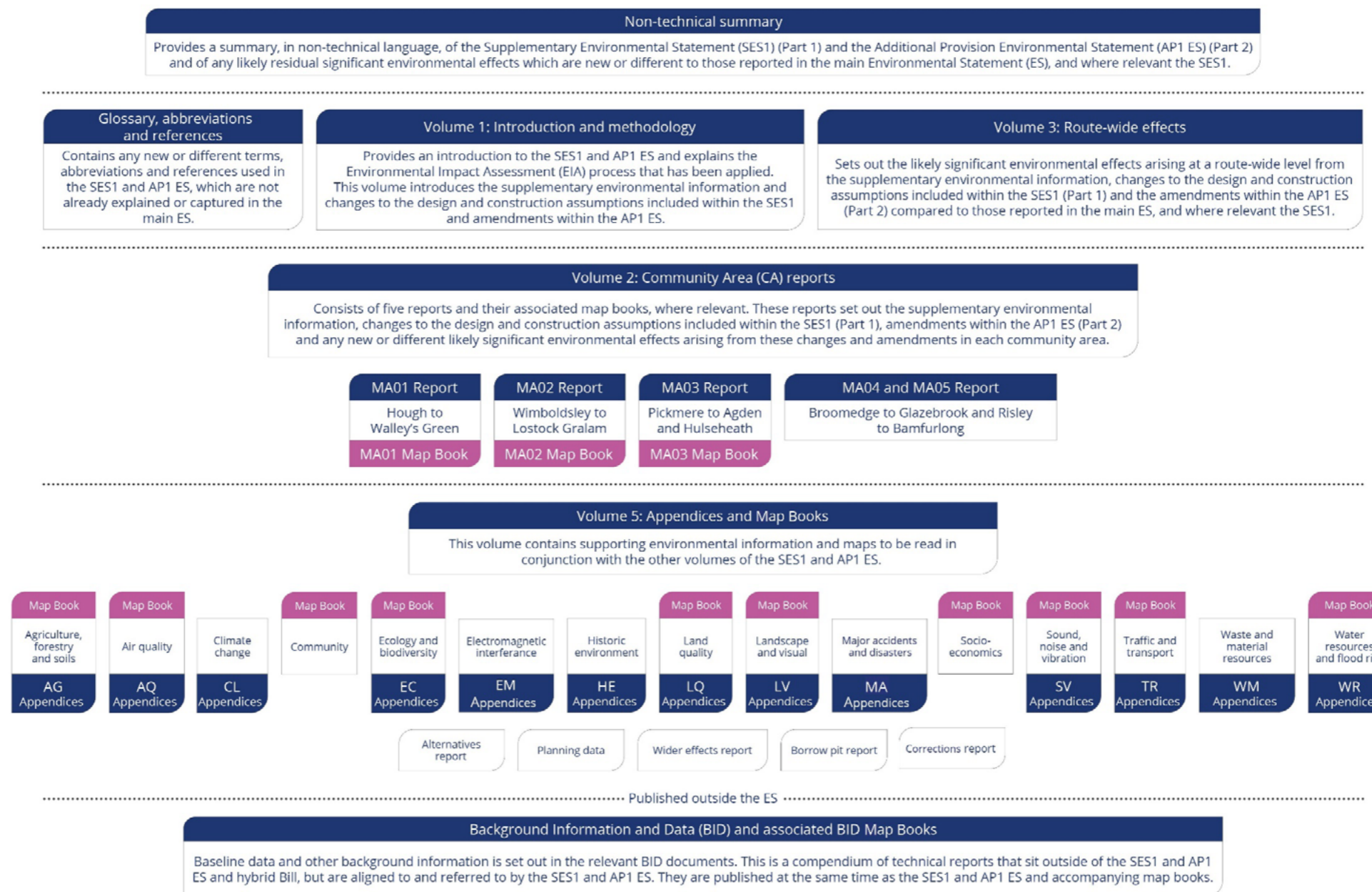
Data dictionary and definitions

Map series name	LQ-01 - Land Quality
Map series description	This Land Quality mapping shows potential sources of existing contamination close to the route as well as historical and operational landfill sites, current and potential future mining or mineral exploitation and geoconservation sites.
Community Area name	
MA01 Hough to Walley's Green	✓
MA02 Wimboldsley to Lostock Gralam	✓
MA03 Pickmere to Agden and Hulseheath	✓
MA04 Broomedge to Glazebrook	
MA05 Risley to Bamfurlong	

Mapping explanatory notes

Structure of the Supplementary Environmental Statement 1 and the Additional Provision 1 Environmental Statement

This map book is part of the suite of documents that make up the Supplementary Environmental Statement 1 (SES1) and the Additional Provision 1 Environmental Statement (AP1 ES) for the High Speed Rail (Crewe – Manchester) scheme. The SES1 and the AP1 ES are separate documents; however, they are bound together and presented in a number of volumes shown in Figure 1.



Copyright statements

Copyright statements are presented in the data dictionary and definitions section at the front of the map book, due to limited space to include this on the individual maps themselves.

Ordnance Survey data

All maps produced as part of the SES1 and AP1 ES contain Ordnance Survey (OS) data. HS2 Ltd use the most up to date mapping available, where possible, supplied by the OS and as such, we cannot be held responsible for any inaccuracies within this data. As part of our licence conditions, all digital maps carry a watermark.

Chainage

Most of the maps presented as part of the SES1 and AP1 ES have a chainage value shown next to the alignment. Chainage is presented on the maps in black font, in the form of XXX+YYY, e.g. 192+000 or 239+500.

Chainage (known as reference chainage) is referenced from Euston Station, which is 0+000, and the value presented is in metres, e.g. 192+000 refers to the point, 192,000m, or 192km, from Euston Station. Chainage values increase in intervals dependent on the map scale. For maps at 1:50,000 scale chainage is shown at 5km intervals. For maps at 1:25,000 scale chainage is shown at 2km intervals. For maps at 1:20,000, 1:10,000, 1:5,000 and 1:2,500 scales, chainage is shown at 1km intervals.

Chainage has been included on the maps as a useful tool for comparing different map sets showing the different environmental themes or engineering plans, due to map sets having different scales, and therefore, showing differing amounts of alignment on the map.

Map sheet layout

Each map in Volume 2 is presented twice, with the main ES map (In Parliament - Session 2021 - 2022) on the left-hand page and the SES1 and the AP1 ES map on the right. For the CT-05 and CT-06 map series, the SES1 and the AP1 ES is shown with different coloured hatching, annotated with labels, which highlights the areas of change. The coloured text box provides a brief description of the design change and amendment, and gives the SES1 and the AP1 ES reference number. In some instances where the effect covers a large area, a box without hatching but with a label, is shown. Only maps which have been amended as a result of the SES1 and the AP1 ES are included within the map books. Other design changes which are within the existing limits of the Bill and do not result in new or different likely significant effects are also shown on the maps, but are not indicated by hatching.

Each Volume 5 map is annotated to describe the change to a receptor or significant effect, and to give the SES1 and the AP1 ES reference number. For more detailed information about the SES1 and the AP1 ES annotation, refer to the map series legend. Only maps which have been amended as a result of the SES1 and the AP1 ES are included within the map book.

Map orientation

The majority of the maps presented in these map books are presented with the railway alignment running horizontally across the page. The direction of travel to London would be following the alignment to the left hand side of the page, and Manchester to the right.

The exception to this, are map series LV-00, LV-02, LV-07 and LV-08, which present the alignment running from bottom to top of the page. This is to allow more of the modelled outputs to be shown at the appropriate map scale. In this instance, the direction of travel to London would be to the bottom of the page, and Manchester to the top.

Further details on the approach to mapping is set out in Section 6 of Volume 1 of the SES1 and AP1 ES.

Map books

In total, there are 14 map books included in the SES1 and AP1 ES Volume 2 and Volume 5. A list of the map book titles and map series is provided below for reference.

Map book title (map series)	Name
Volume 2: Map book – MA01: Hough to Walley's Green (CT-05, CT-06, CT-10, LV-01, LV-03, LV-04, SV-05)	Volume 5: Map book – Land quality (LQ-01)
Volume 2: Map book – MA02: Wimboldsley to Lostock Gralam (CT-05, CT-06, CT-10, LV-01, LV-03, LV-04, SV-05)	Volume 5: Map book – Landscape and visual (LV-00, LV-02, LV-07, LV-08, LV-17)
Volume 2: Map book – MA03: Pickmere to Agden and Hulseheath (CT-05, CT-06, CT-10, LV-01, LV-03, LV-04, SV-05)	Volume 5: Map book – Planning Data/Committed Development (CT-13)
Volume 5: Map book – Agriculture (AG-01, AG-04)	Volume 5: Map book – Socio-economics (SE-01)
Volume 5: Map book – Air quality (AQ-01)	Volume 5: Map book – Sound, noise and vibration (SV-02, SV-03, SV-08, SV-09)
Volume 5: Map book – Community (CM-01)	Volume 5: Map book – Traffic and transport (TR-03, TR-04, TR-08)
Volume 5: Map book – Ecology and biodiversity (EC-01)	Volume 5: Map book – Water resources and flood risk (WR-02)

High Speed Rail (Crewe – Manchester)

Supplementary Environmental Statement 1 and Additional Provision 1 Environmental Statement

Data dictionary and definitions

Data dictionary and definitions

Legend features	Definition	Source	Copyright
Active salt mine/brine extraction site/brinefield	Areas of land that are currently being worked (or have previously been worked) for salt resources.	Cheshire East Council and Cheshire West and Chester Council	© Cheshire East Council. © Cheshire West and Chester Council.
Areas assessed as not posing a contaminative risk in relation to the Proposed Scheme	Areas of land assessed from existing baseline information such as historical mapping, as not posing a potential contaminative risk to the Proposed Scheme.	High Speed Two (HS2) Ltd	
Areas assessed as potentially posing a contaminative risk in relation to the Proposed Scheme	Areas of land assessed from existing baseline information such as historical mapping, as potentially posing a potential contaminative risk to the Proposed Scheme. These sites do not automatically equate to identified 'potentially contaminated land' as defined by EPA 1990.	High Speed Two (HS2) Ltd	
Community area boundary	The Environmental Statement has been split into sections called Community Areas.	High Speed Two (HS2) Ltd	© Crown copyright. Reproduced by permission of Ordnance Survey Licence Number 100049190. Year of Publication 2019.
Consented salt mine/brine extraction site/brinefield	Areas of land that have been consented for extraction of salt resources but are not currently being worked.	Cheshire East Council and Cheshire West and Chester Council	© Cheshire East Council. © Cheshire West and Chester Council.
County boundary	County boundaries from Ordnance Survey boundary mapping.	Ordnance Survey	© Crown copyright. Reproduced by permission of Ordnance Survey Licence Number 100049190. Year of Publication 2021.
Depot, station, headhouse or portal building	Extends to cover operational footprint of each depot and station and the footprint of each tunnel vent shaft and headhouse at surface level. Excludes any ancillary buildings associated with these structures.	High Speed Two (HS2) Ltd	
District/Borough boundary	Ordnance Survey local authority boundary mapping.	Ordnance Survey	© Crown copyright. Reproduced by permission of Ordnance Survey Licence Number 100049190. Year of Publication 2021.
Geoconservation sites	Identified and managed site of geological or geomorphological or mineral interest, which can include natural processes such as coastal erosion, and where consideration of their importance becomes integral to the planning process.	Cheshire East council	© Cheshire East council (2016).

Legend features	Definition	Source	Copyright
Land potentially required during construction	Boundary defining the maximum possible extent of construction works required to build HS2 as far as the current level of design allows. This only covers surface works and includes all tunnel portals, vent shafts and headhouses, but does not apply to wholly tunnelled sections or to air rights. It also encompasses associated highway, access, drainage and utility works.	High Speed Two (HS2) Ltd	
Landfill site (historical or active)	An active landfill is one that is currently receiving waste and / or where an environmental permit is in force	Environment Agency	© Environment Agency copyright and/or database right 2021. All rights reserved.
Mineral safeguard areas	Mineral safeguarding areas are areas of known mineral resources defined by the local Minerals Authority as areas of sufficient economic importance to warrant protection for future exploitation.	British Geological Survey (BGS)	Reproduced with the permission of the British Geological Survey ©NERC. All rights reserved.
Petroleum Exploration and Development Licence (PEDL)	An area covered by a PEDL grants the licensee exclusivity over that area for onshore hydrocarbon exploration, appraisal and extraction.	Department for Business, Energy & Industrial Strategy	Contains information provided by the OGA.
Preferred areas or extensions to brinefield/salt mine	Areas of land that have been identified by the local Minerals Authority to warrant protection for future exploitation of known salt resources.	Cheshire East Council and Cheshire West and Chester Council	© Cheshire East Council. © Cheshire West and Chester Council.
Registered park and garden	Parks and Gardens of special historic interest. Supplied by Historic England. Of the 1,590 Registered Parks and Gardens, over 91% were captured against the 1:10,000 Ordnance Survey Raster product. 135 records are potentially subject to movement under Positional Accuracy Improvement (PAI) improvements.	Historic England	© Historic England 2021. Contains Ordnance Survey data © Crown copyright and database right 2021 The Historic England GIS Data contained in this material was obtained on 21 October 2021. The most publicly available up to date Historic England GIS Data can be obtained from HistoricEngland.org.uk .
Route in tunnel	Represents the proposed route of HS2, split into route on surface and tunnelled sections.	High Speed Two (HS2) Ltd	
Route on surface	Represents the proposed route of HS2, split into route on surface and tunnelled sections.	High Speed Two (HS2) Ltd	
Shale Prospective Area (SPA)	An area identified by the British Geological Survey as having the greatest potential for shale gas to be present.	Department for Business, Energy & Industrial Strategy	Contains information provided by the OGA.
Water body	Any mass of water having definite hydrological, physical, chemical and biological characteristics.	Ordnance Survey	© Crown copyright. Reproduced by permission of Ordnance Survey Licence Number 100049190. Year of Publication 2021.

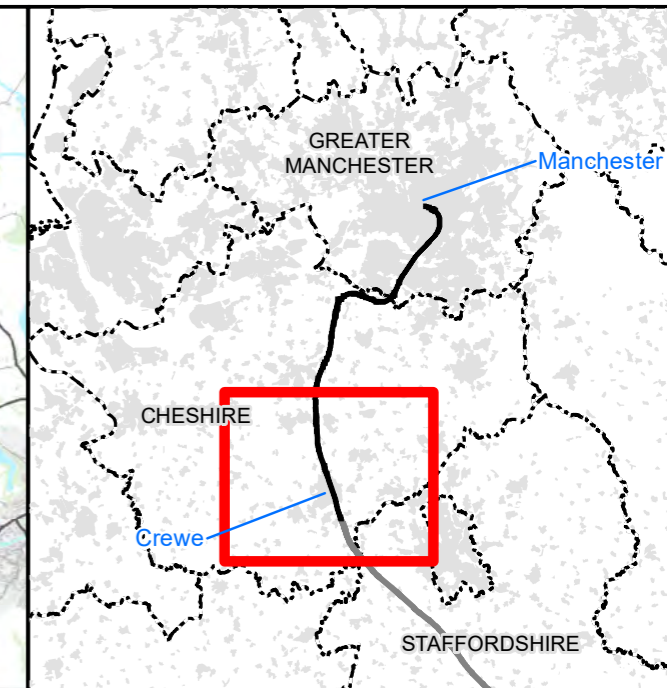
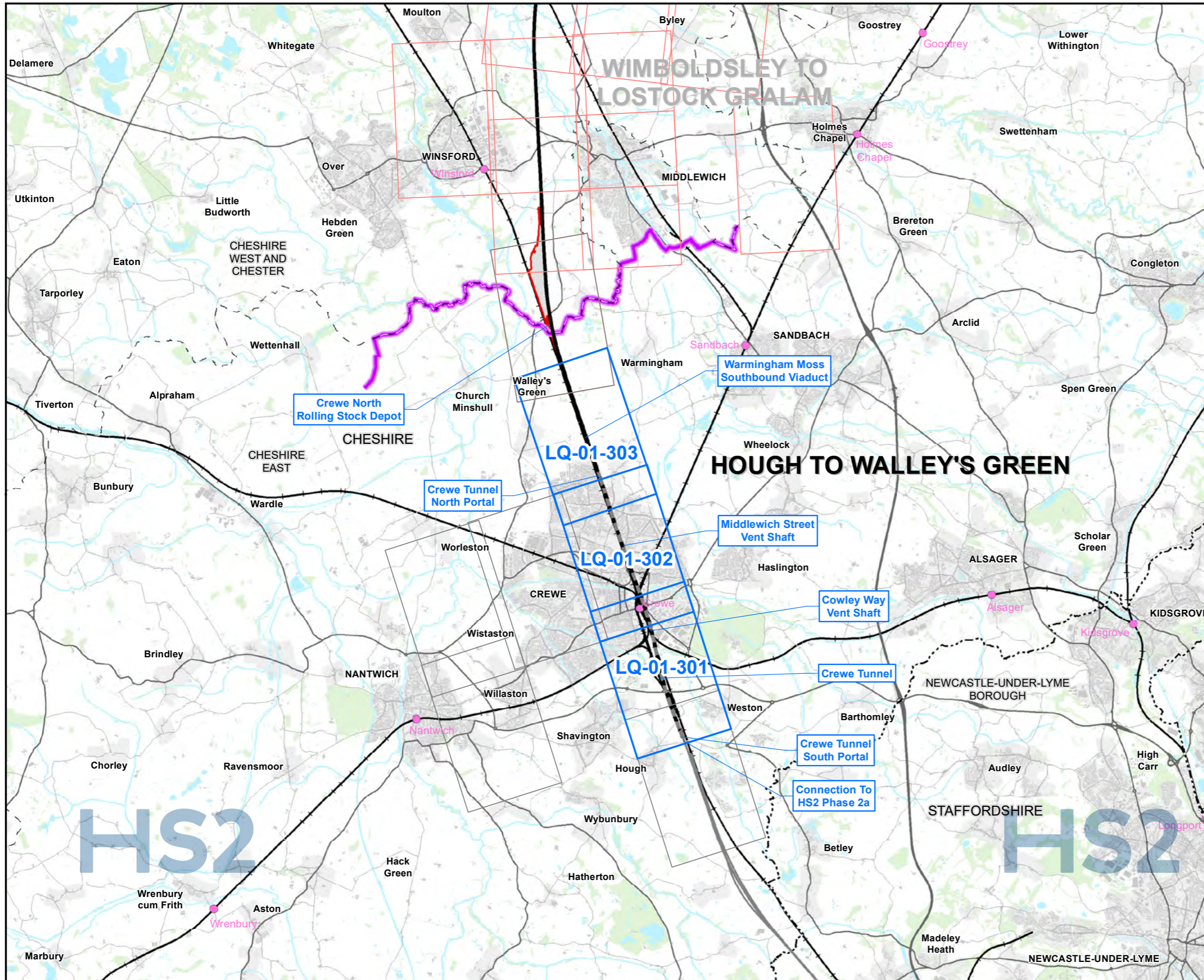
Legend features	Definition	Source	Copyright
Watercourse	Any channel through which water flows, can be natural or manmade. They are split into two categories (main rivers or ordinary watercourses) in England and Wales for regulation purposes.	Ordnance Survey	© Crown copyright. Reproduced by permission of Ordnance Survey Licence Number 100049190. Year of Publication 2021.
Woodland	Woodland areas derived from Ordnance Survey MasterMap data.	Ordnance Survey	© Crown copyright. Reproduced by permission of Ordnance Survey Licence Number 100049190. Year of Publication 2021.

High Speed Rail (Crewe – Manchester)

Supplementary Environmental Statement 1 and Additional Provision 1 Environmental Statement

MA01: Hough to Walley's Green

LQ-01 – Land Quality



Map Series Information:

This Land Quality mapping shows potential sources of existing contamination close to the route as well as historical and operational landfill sites, current and potential future mining or mineral exploitation and geoconservation sites

Note: Not all data layers in the legend are represented on every map.

Main Map Legend

	Route in tunnel		Map sheets included in this community area
	Route on surface		Map sheet included in this community area with no amendment
	Depot, station, headhouse or portal building		Map sheets not included in this community area
	Community area boundary		
	Existing railway station		
	County boundary		
	District/Borough boundary		

Map Number	LQ-01-INDEX-MA01
Map Name	Index Map of: Land Quality SES1 and AP1 ES Community Area MA01: Hough to Walley's Green

HS2

Registered in England. Registration number 06791686.
Registered office: Two Snowhill, Snow Hill Queensway,
Birmingham B4 6GA.

Scale at A3: 1:100,000

© Crown copyright and database rights 2021
OS 100049190

Doc Number: 2PT24-MWJ-EV-MAP-M000-001754-P01

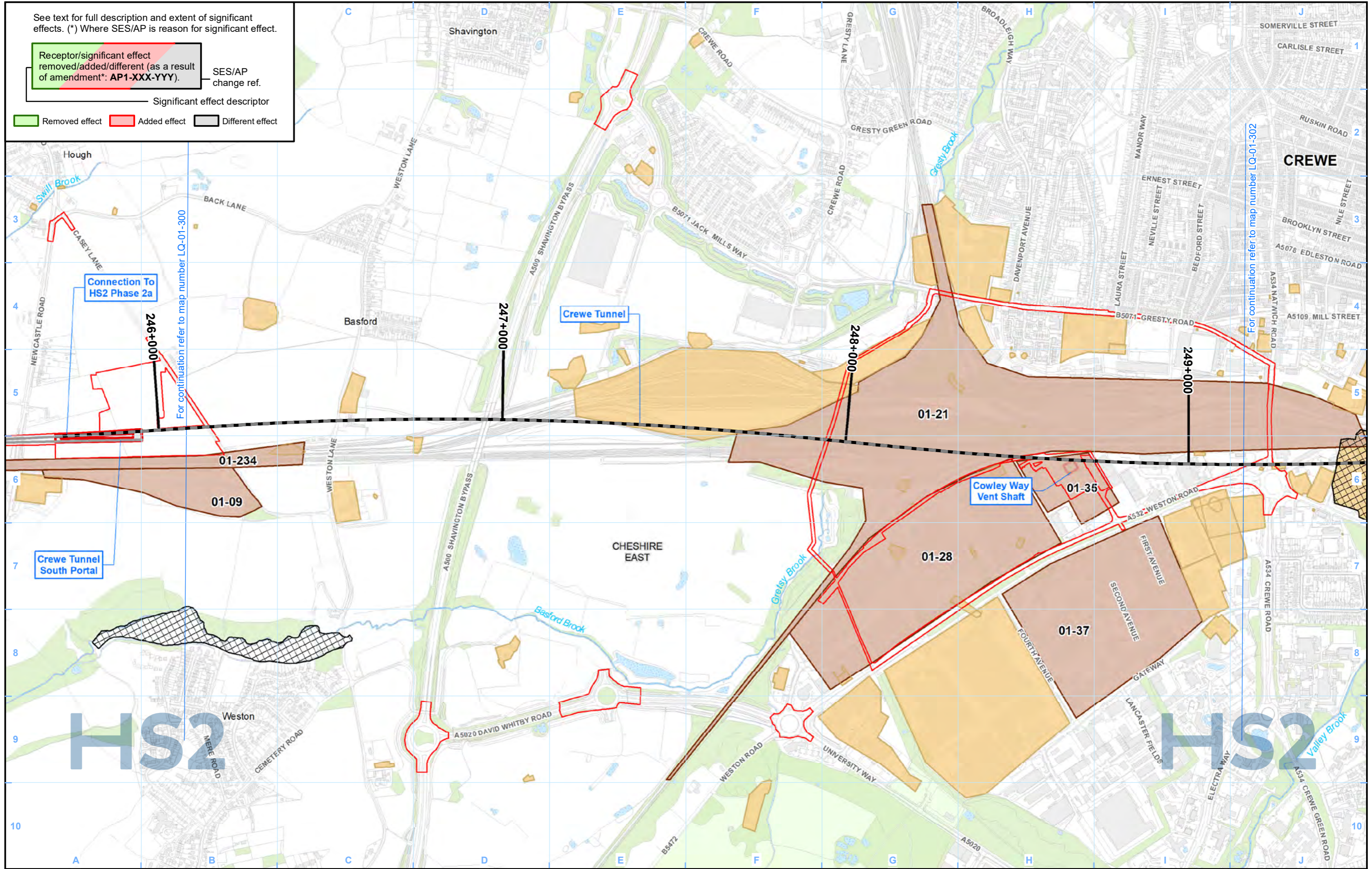
Date: 21/04/22

See text for full description and extent of significant effects. (*) Where SES/AP is reason for significant effect.

Receptor/significant effect removed/added/different (as a result of amendment*: AP1-XXX-YYY). — SES/AP change ref.

Significant effect descriptor

Removed effect Added effect Different effect



Legend

- Route in tunnel
- Route on surface
- Depot, station, headhouse or portal building
- Land potentially required during construction
- Community area boundary
- County boundary
- District/Borough boundary
- Watercourse
- Water body
- Woodland
- Registered park/garden
- Landfill site (historical or active)
- Geoconservation site
- Area assessed as not posing a contaminative risk in relation to the Proposed Scheme
- Area assessed as potentially posing a contaminative risk in relation to the Proposed Scheme
- 01-126 — Site No.
- CA No.

Petroleum Exploration and Development Licences are present within the study area, see relevant Volume 2 report for details. A Shale Prospective Area covers the entire study area.

Map Number: LQ-01-301

Map Name: Land Quality SES1 and AP1 ES

Community Area MA01: Hough to Walley's Green

HS2

Registered in England. Registration number 06791686. Registered office: Two Snowhill, Snow Hill Queensway, Birmingham B4 6GA.

© Crown copyright and database rights 2021 OS 100049190

Doc Number: 2PT24-MWJ-EV-MAP-M000-001719-P01

Scale at A3: 1:10,000

Date: 21/04/22

For continuation refer to map number LQ-01-302

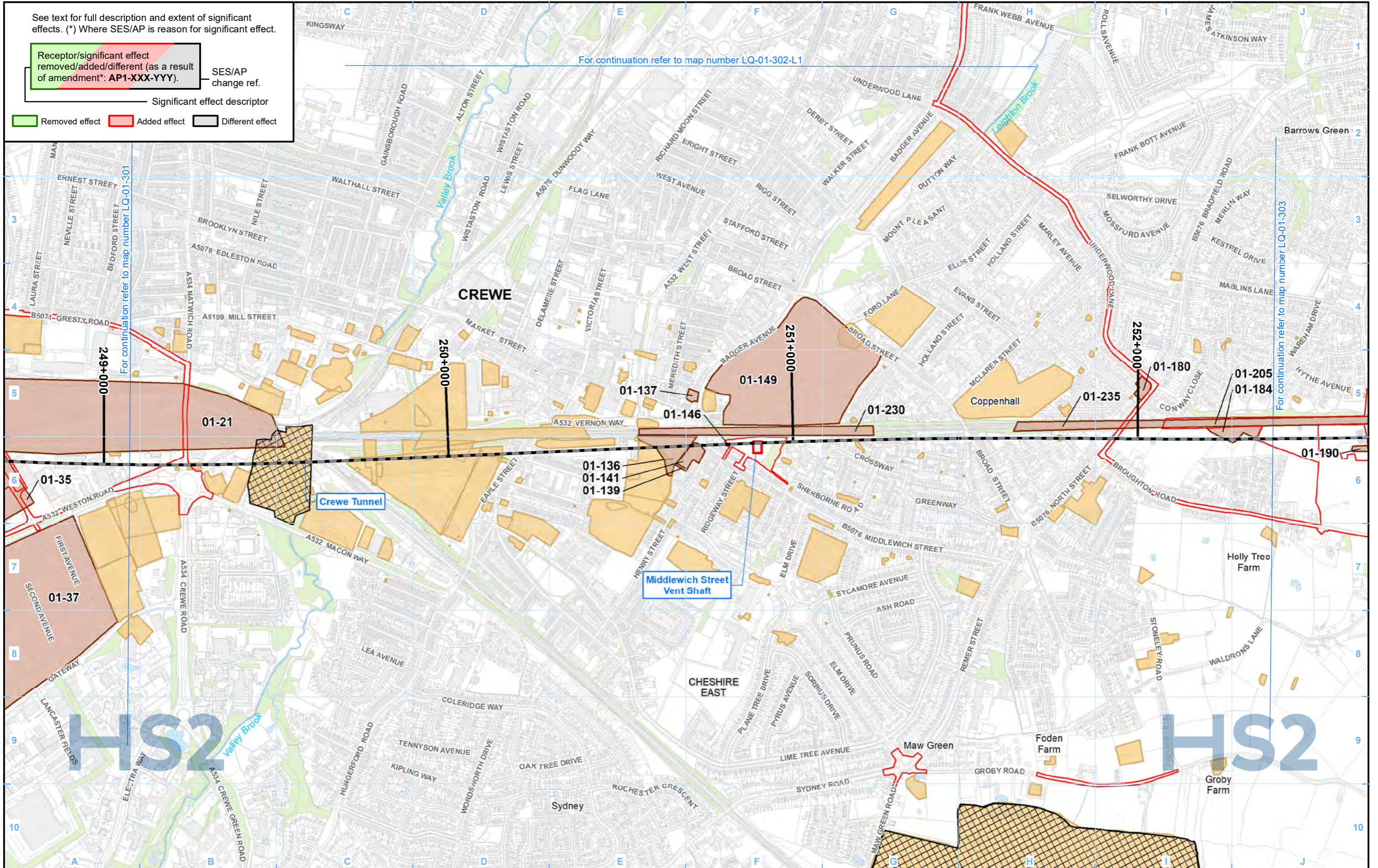
See text for full description and extent of significant effects. (*) Where SES/AP is reason for significant effect.

Receptor/significant effect removed/added/different (as a result of amendment*: AP1-XXX-YYY) — SES/AP change ref.

Significant effect descriptor

Removed effect (Green) Added effect (Red) Different effect (Grey)

For continuation refer to map number LQ-01-302-L1



Legend

- Route in tunnel (Dashed line)
- Route on surface (Solid line)
- Depot, station, headhouse or portal building (Red outline)
- Land potentially required during construction (Red outline)
- Community area boundary (Purple outline)
- County boundary (Dotted line)
- District/Borough boundary (Dashed line)
- Watercourse (Blue line)
- Water body (Blue area)
- Woodland (Green area)
- Registered park/garden (Light green area)
- Landfill site (historical or active) (Cross-hatched area)
- Geoconservation site (Dotted area)
- Area assessed as not posing a contaminative risk in relation to the Proposed Scheme (Light orange area)
- Area assessed as potentially posing a contaminative risk in relation to the Proposed Scheme (Dark orange area)
- Site No. (01-126)
- CA No. (—)

Petroleum Exploration and Development Licences are present within the study area, see relevant Volume 2 report for details. A Shale Prospective Area covers the entire study area.

Map Number: LQ-01-302

Map Name: Land Quality SES1 and AP1 ES

Community Area MA01: Hough to Walley's Green

HS2

Registered in England. Registration number 06791686. Registered office: Two Snowhill, Snow Hill Queensway, Birmingham B4 6GA.

© Crown copyright and database rights 2021 OS 100049190

Doc Number: 2PT24-MWJ-EV-MAP-M000-001720-P01

Date: 21/04/22

Scale at A3: 1:10,000

0 100 200 300 400 Metres

See text for full description and extent of significant effects. (*) Where SES/AP is reason for significant effect.

Receptor/significant effect removed/added/different (as a result of amendment*: AP1-XXX-YYY). SES/AP change ref.

Significant effect descriptor

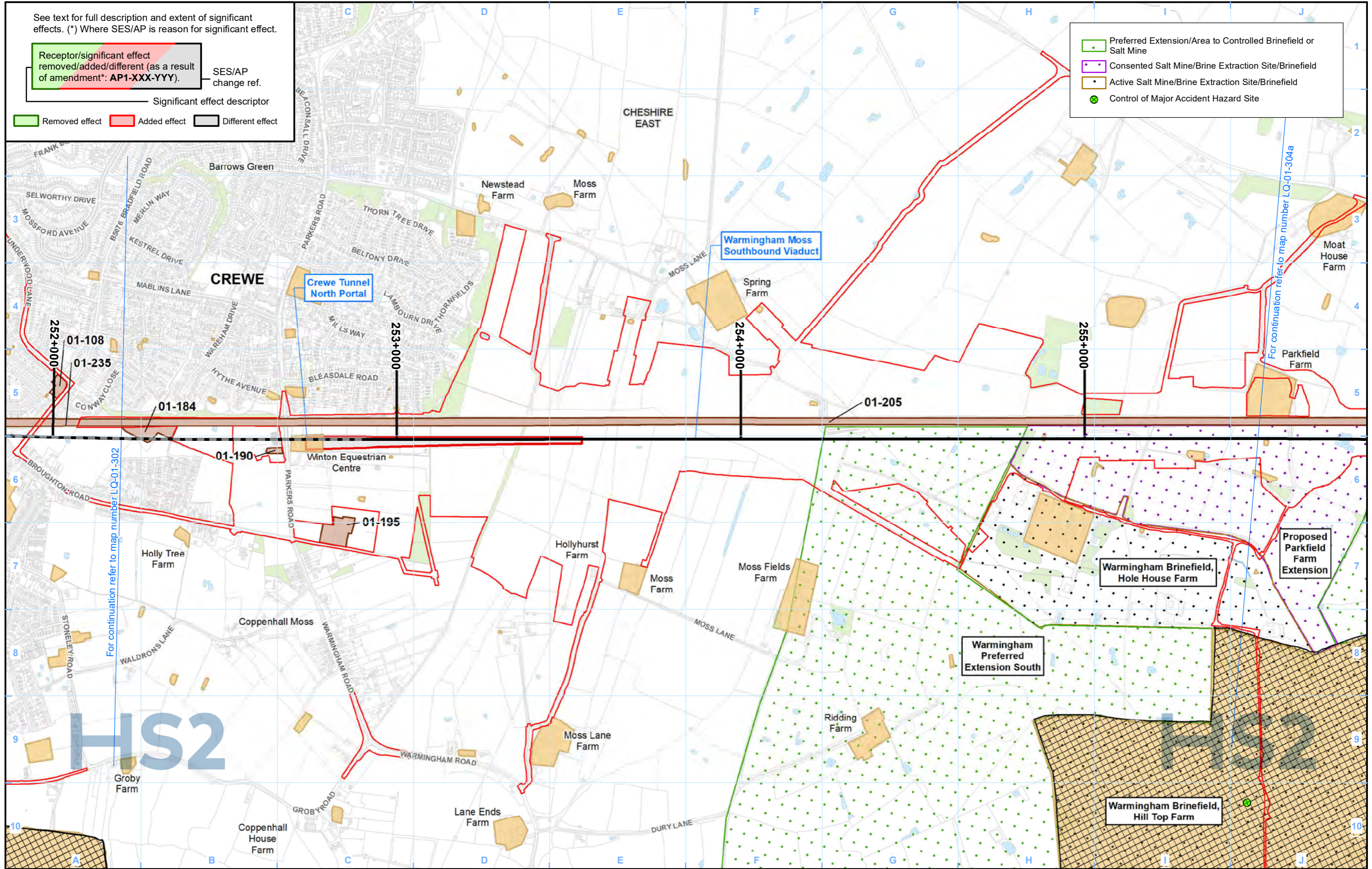
Removed effect Added effect Different effect

Preferred Extension/Area to Controlled Brinefield or Salt Mine

Consented Salt Mine/Brine Extraction Site/Brinefield

Active Salt Mine/Brine Extraction Site/Brinefield

Control of Major Accident Hazard Site



Legend

- Route in tunnel
- Route on surface
- Depot, station, headhouse or portal building
- Land potentially required during construction
- Community area boundary
- County boundary
- District/Borough boundary
- Watercourse
- Water body
- Woodland
- Registered park/garden
- Landfill site (historical or active)
- Geoconservation site
- Area assessed as not posing a contaminative risk in relation to the Proposed Scheme
- Area assessed as potentially posing a contaminative risk in relation to the Proposed Scheme
- Site No.
- CA No.

Petroleum Exploration and Development Licences are present within the study area, see relevant Volume 2 report for details. A Shale Prospective Area covers the entire study area.

Map Number: LQ-01-303

Map Name: Land Quality SES1 and AP1 ES

Community Area MA01: Hough to Walley's Green

HS2

Registered in England. Registration number 06791686. Registered office: Two Snowhill, Snow Hill Queensway, Birmingham B4 6GA.

© Crown copyright and database rights 2021 OS 100049190

Doc Number: 2PT24-MWJ-EV-MAP-M000-001721-P01

Date: 21/04/22

Scale at A3: 1:10,000

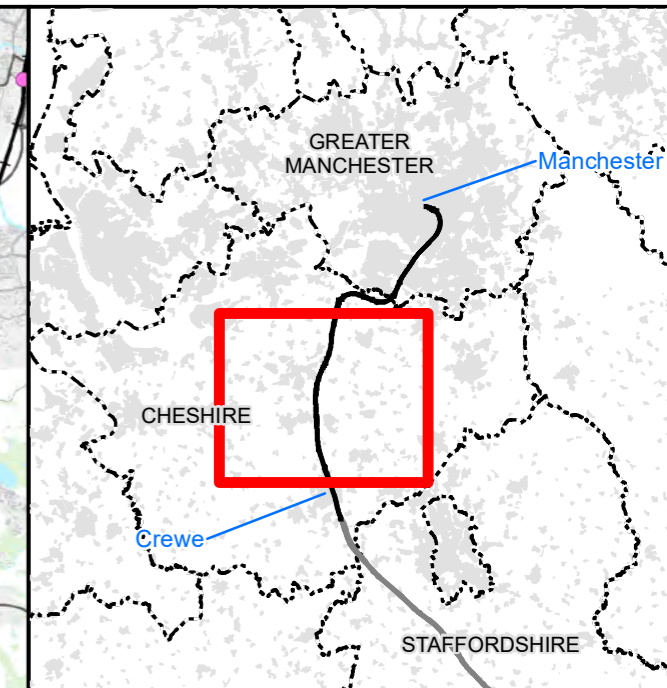
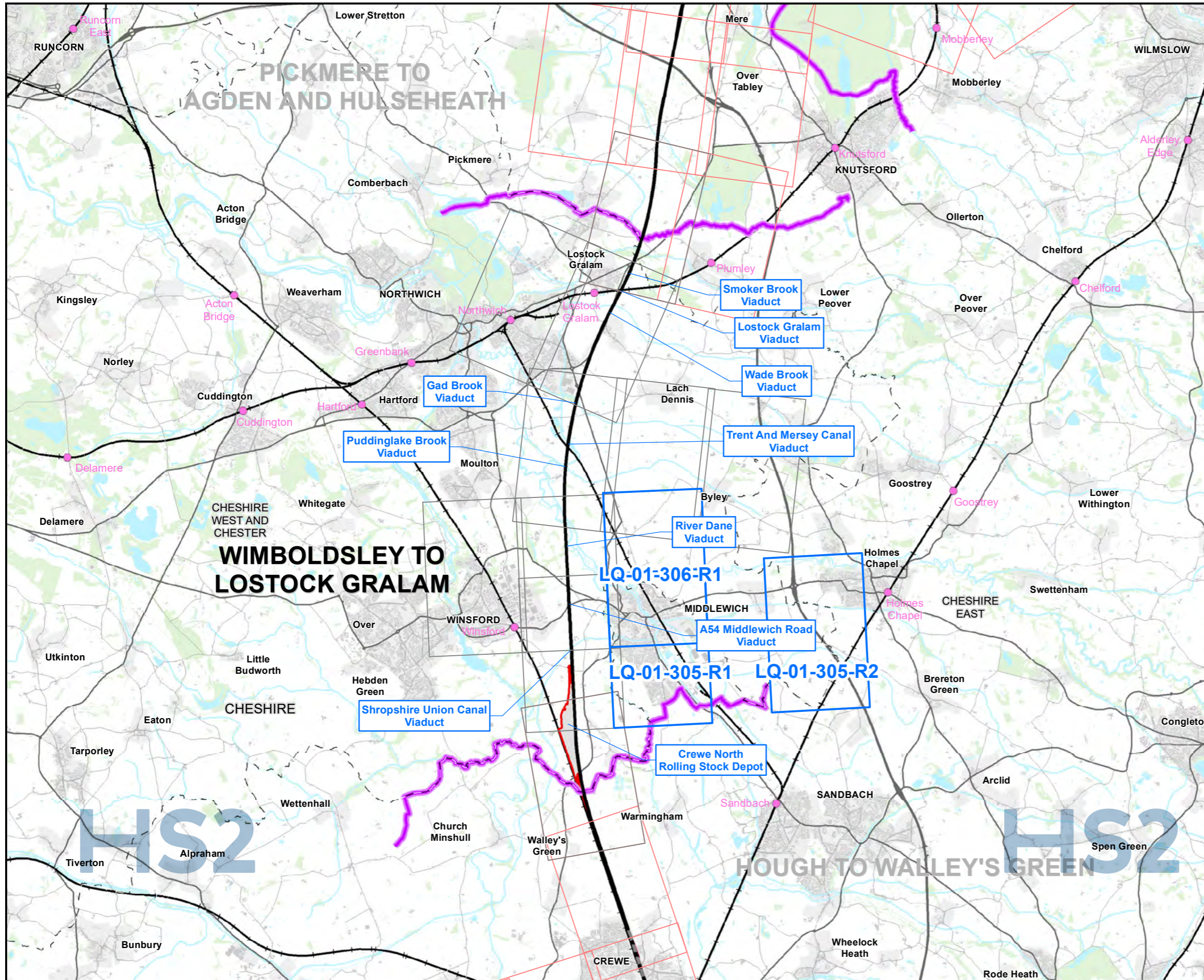
0 100 200 300 400 Metres

This page is left intentionally blank

High Speed Rail (Crewe – Manchester)

Supplementary Environmental Statement 1 and Additional Provision 1 Environmental Statement

MA02: Wimboldsley to Lostock Gralam
LQ-01 – Land Quality



Map Series Information:

This Land Quality mapping shows potential sources of existing contamination close to the route as well as historical and operational landfill sites, current and potential future mining or mineral exploitation and geoconservation sites

Main Map Legend	
	Route in tunnel
	Route on surface
	Depot, station, headhouse or portal building
	Community area boundary
	Existing railway station
	County boundary
	District/Borough boundary
	Map sheets included in this community area
	Map sheet included in this community area with no amendment
	Map sheets not included in this community area

Map Number	LQ-01-INDEX-MA02
Map Name	Index Map of: Land Quality SES1 and AP1 ES Community Area MA02: Wimboldsley to Lostock Gralam

HS2 Ltd accept no responsibility for any circumstances, which arise from the reproduction of this map after alteration, amendment or abbreviation or if it is issued in part or issued incomplete in any way.

Registered in England. Registration number 06791686.
Registered office: Two Snowhill, Snow Hill Queensway, Birmingham B4 6GA.

© Crown copyright and database rights 2021
OS 100049190

Scale at A3: 1:100,000

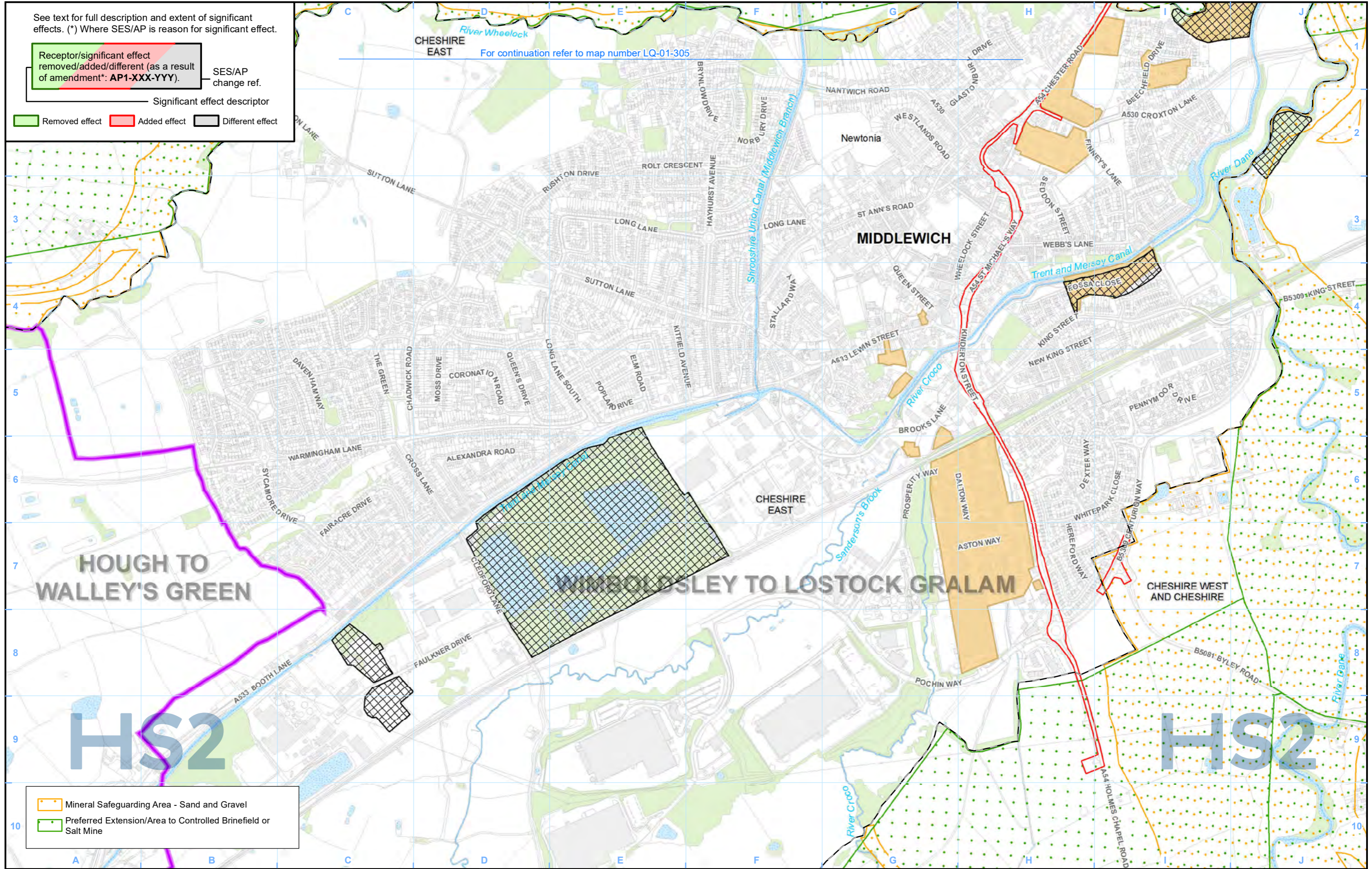
Doc Number: 2PT24-MWJ-EV-MAP-M000-001755-P01
Date: 21/04/22

See text for full description and extent of significant effects. (*) Where SES/AP is reason for significant effect.

Receptor/significant effect removed/added/different (as a result of amendment*: AP1-XXX-YYY). SES/AP change ref.

Significant effect descriptor

Removed effect Added effect Different effect



Mineral Safeguarding Area - Sand and Gravel

Preferred Extension/Area to Controlled Brinefield or Salt Mine

Legend

- Route in tunnel
- Route on surface
- Depot, station, headhouse or portal building
- Land potentially required during construction
- Community area boundary
- County boundary
- District/Borough boundary
- Watercourse
- Water body
- Woodland
- Registered park/garden
- Landfill site (historical or active)
- Geoconservation site
- Area assessed as not posing a contaminative risk in relation to the Proposed Scheme
- Area assessed as potentially posing a contaminative risk in relation to the Proposed Scheme
- Site No.
- CA No.

Petroleum Exploration and Development Licences are present within the study area, see relevant Volume 2 report for details. A Shale Prospective Area covers the entire study area.

Map Number: LQ-01-305-R1

Map Name: Land Quality SES1 and AP1 ES

Community Area MA02: Wimboldsley to Lostock Gralam

HS2

Registered in England. Registration number 06791686. Registered office: Two Snowhill, Snow Hill Queensway, Birmingham B4 6GA.

© Crown copyright and database rights 2021 OS 100049190

Doc Number: 2PT24-MWJ-EV-MAP-M000-002789-P01

Date: 21/04/22

Scale at A3: 1:10,000

0 100 200 300 400 Metres

See text for full description and extent of significant effects. (*) Where SES/AP is reason for significant effect.

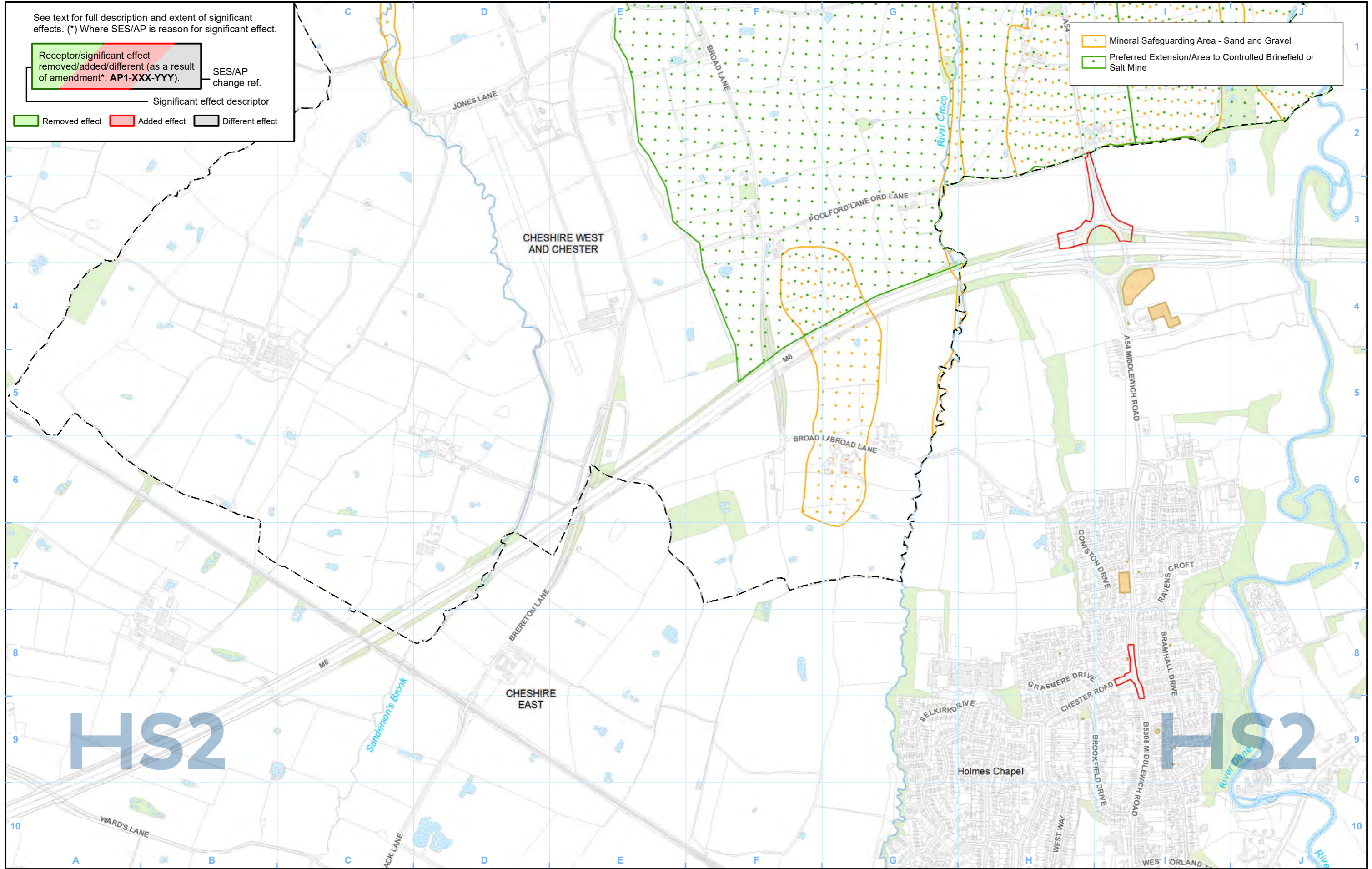
Receptor/significant effect removed/added/different (as a result of amendment*: AP1-XXX-YYY). SES/AP change ref.

Significant effect descriptor

Removed effect Added effect Different effect

Mineral Safeguarding Area - Sand and Gravel

Preferred Extension/Area to Controlled Brinefield or Salt Mine



Legend

- Route in tunnel
- Route on surface
- Depot, station, headhouse or portal building
- Land potentially required during construction
- Community area boundary
- County boundary
- District/Borough boundary
- Watercourse
- Water body
- Woodland
- Registered park/garden
- Landfill site (historical or active)
- Geoconservation site
- Area assessed as not posing a contaminative risk in relation to the Proposed Scheme
- Area assessed as potentially posing a contaminative risk in relation to the Proposed Scheme
- Site No.
- CA No.

Petroleum Exploration and Development Licences are present within the study area, see relevant Volume 2 report for details. A Shale Prospective Area covers the entire study area.

Map Number: LQ-01-305-R2

Map Name: Land Quality SES1 and AP1 ES

Community Area MA02: Wimboldsley to Lostock Gralam

HS2

Registered in England. Registration number 06791686. Registered office: Two Snowhill, Snow Hill Queensway, Birmingham B4 6GA.

© Crown copyright and database rights 2021 OS 100049190

Doc Number: 2PT24-MWJ-EV-MAP-M000-004120-P01

Date: 21/04/22

Scale at A3: 1:10,000

0 100 200 300 400 Metres

See text for full description and extent of significant effects. (*) Where SES/AP is reason for significant effect.

Receptor/significant effect removed/added/different (as a result of amendment*: AP1-XXX-YYY). SES/AP change ref.

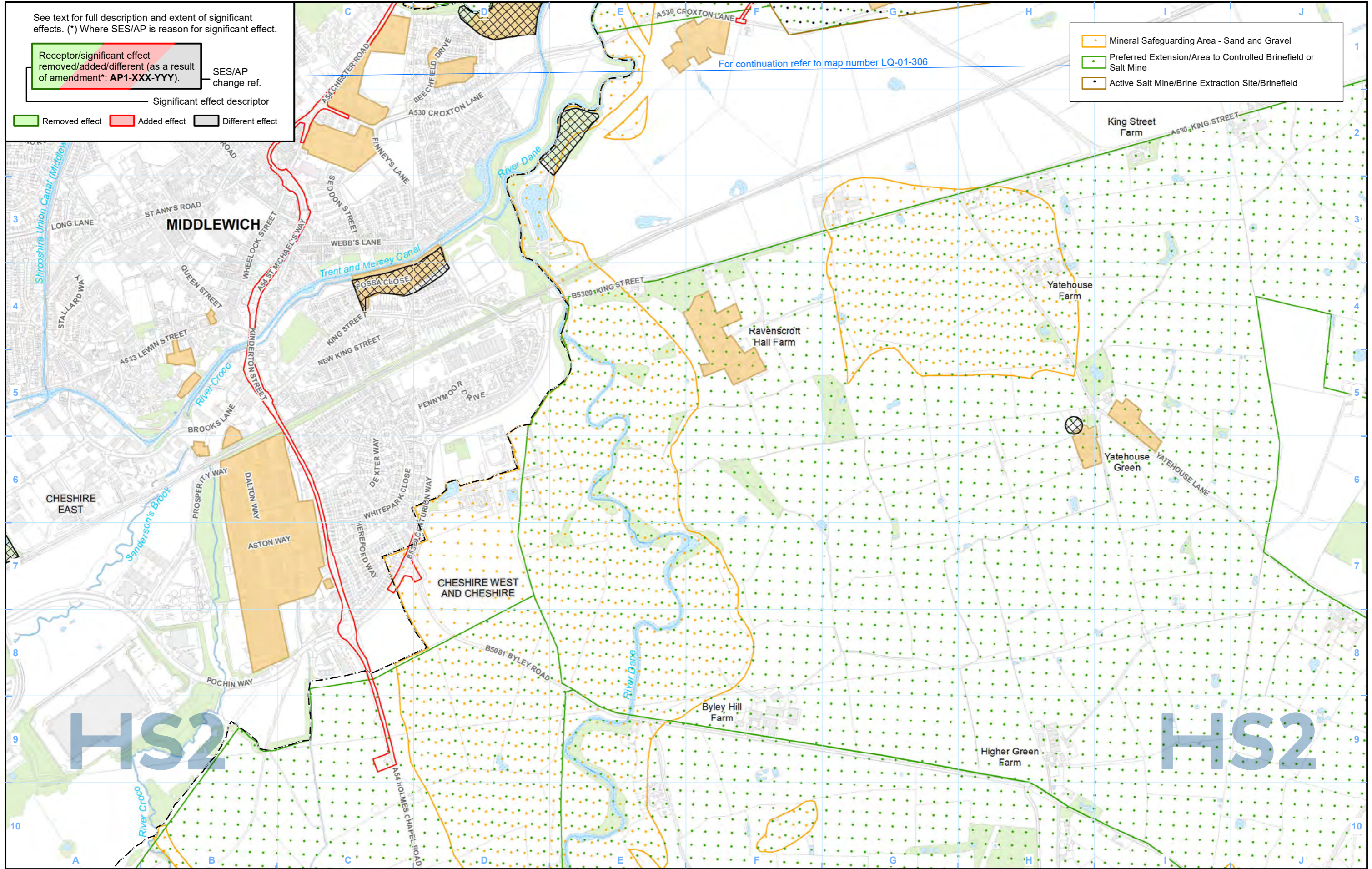
Significant effect descriptor

Removed effect Added effect Different effect

Mineral Safeguarding Area - Sand and Gravel

Preferred Extension/Area to Controlled Brinefield or Salt Mine

Active Salt Mine/Brine Extraction Site/Brinefield



For continuation refer to map number LQ-01-306

Legend

- Route in tunnel
- Route on surface
- Depot, station, headhouse or portal building
- Land potentially required during construction
- Community area boundary
- County boundary
- District/Borough boundary
- Watercourse
- Water body
- Woodland
- Registered park/garden
- Landfill site (historical or active)
- Geoconservation site
- Area assessed as not posing a contaminative risk in relation to the Proposed Scheme
- Area assessed as potentially posing a contaminative risk in relation to the Proposed Scheme
- Site No.
- CA No.

Petroleum Exploration and Development Licences are present within the study area, see relevant Volume 2 report for details. A Shale Prospective Area covers the entire study area.

Map Number: LQ-01-306-R1

Map Name: Land Quality SES1 and AP1 ES

Community Area MA02: Wimboldsley to Lostock Gralam

HS2

Registered in England. Registration number 06791686. Registered office: Two Snowhill, Snow Hill Queensway, Birmingham B4 6GA.

© Crown copyright and database rights 2021 OS 100049190

Doc Number: 2PT24-MWJ-EV-MAP-M000-002779-P01

Date: 21/04/22

Scale at A3: 1:10,000

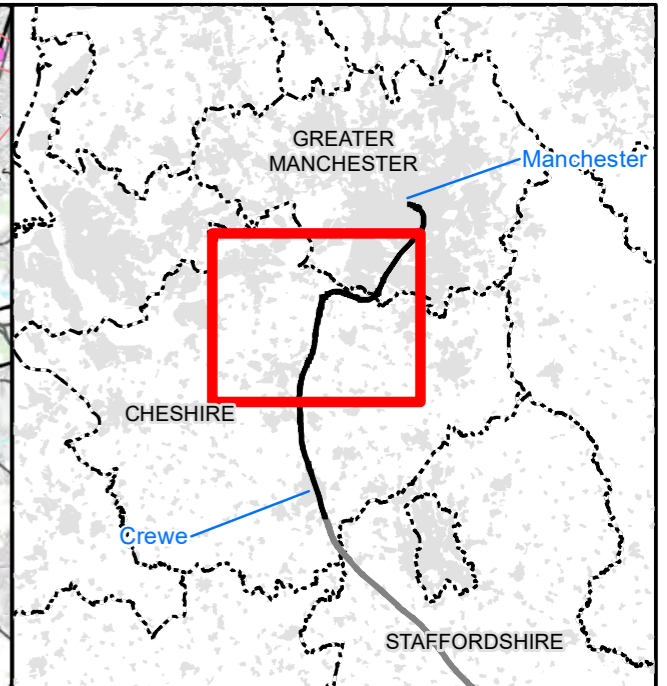
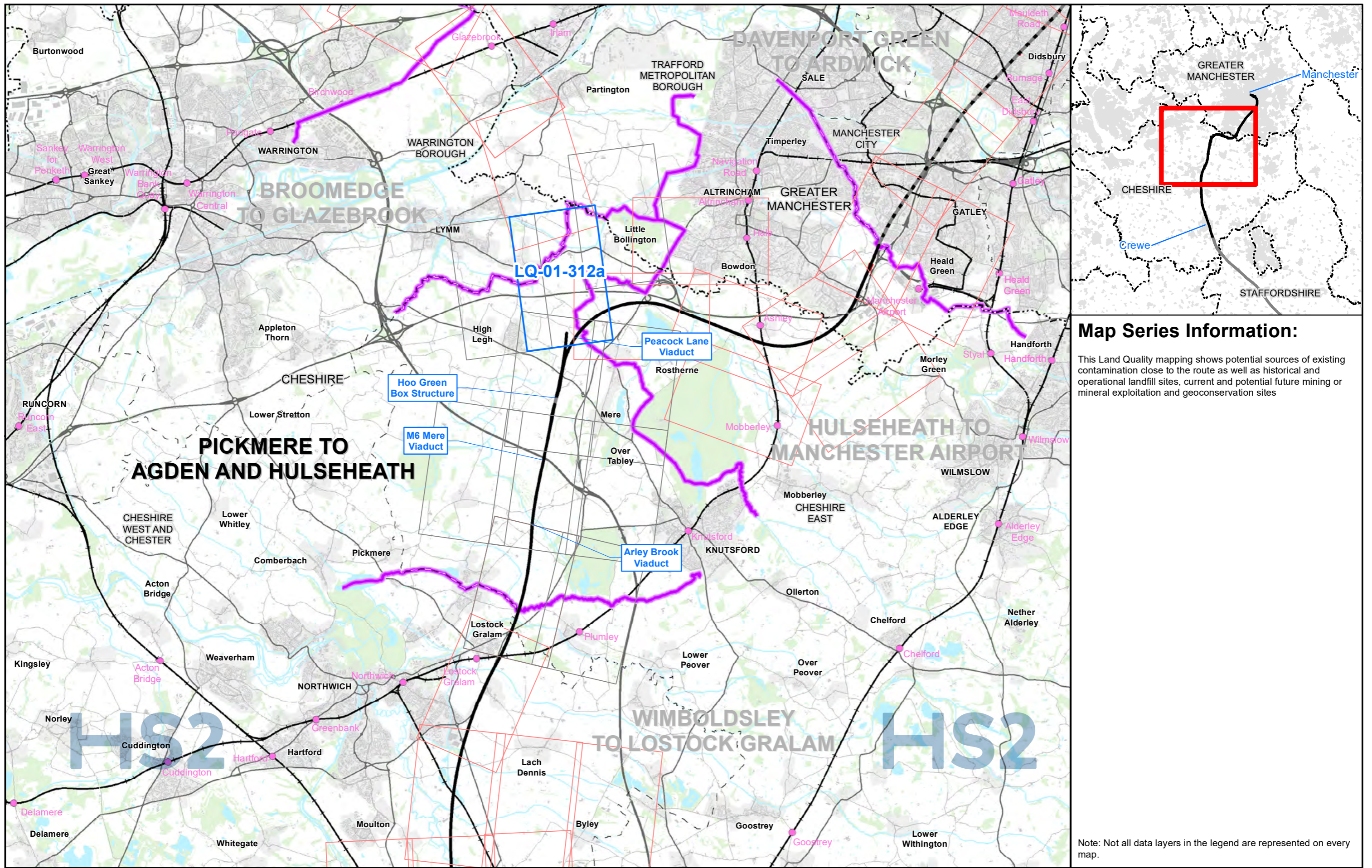
0 100 200 300 400 Metres

This page is left intentionally blank

High Speed Rail (Crewe – Manchester)

Supplementary Environmental Statement 1 and Additional Provision 1 Environmental Statement

MA03: Pickmere to Agden and Hulseheath
LQ-01 – Land Quality



Map Series Information:

This Land Quality mapping shows potential sources of existing contamination close to the route as well as historical and operational landfill sites, current and potential future mining or mineral exploitation and geoconservation sites

- Main Map Legend**
- Route in tunnel
 - Route on surface
 - Depot, station, headhouse or portal building
 - Community area boundary
 - Existing railway station
 - County boundary
 - District/Borough boundary
 - Map sheets included in this community area
 - Map sheet included in this community area with no amendment
 - Map sheets not included in this community area

Map Number: LQ-01-INDEX-MA03

Map Name: Index Map of: Land Quality SES1 and AP1 ES Community Area MA03: Pickmere to Agden and Hulseheath

HS2

Registered in England. Registration number 06791686. Registered office: Two Snowhill, Snow Hill Queensway, Birmingham B4 6GA.

© Crown copyright and database rights 2021 OS 100049190

Doc Number: 2PT24-MWJ-EV-MAP-M000-001756-P01

Date: 21/04/22

Scale at A3: 1:100,000

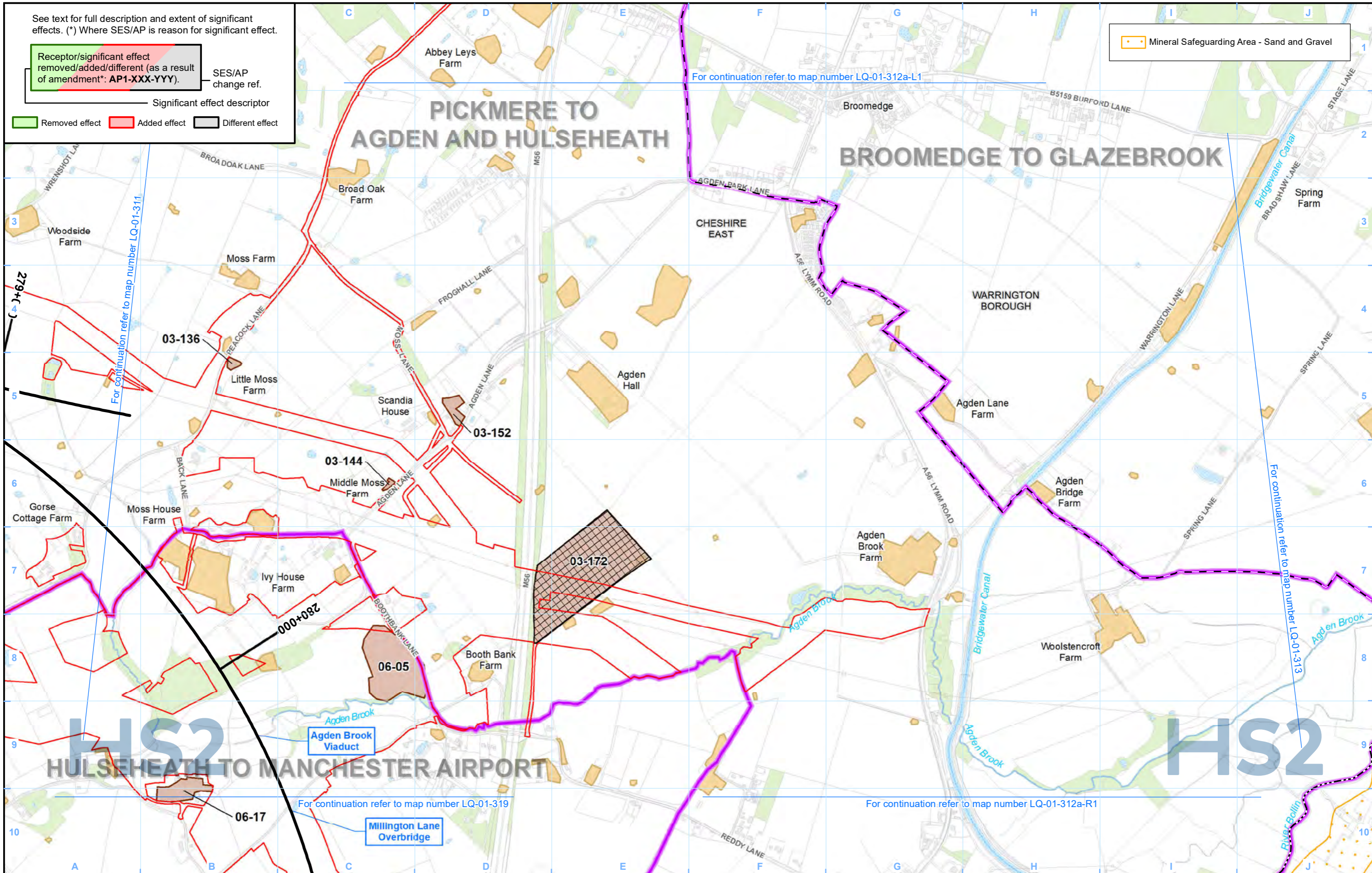
See text for full description and extent of significant effects. (*) Where SES/AP is reason for significant effect.

Receptor/significant effect removed/added/different (as a result of amendment*: AP1-XXX-YYY). SES/AP change ref.

Significant effect descriptor

Removed effect Added effect Different effect

Mineral Safeguarding Area - Sand and Gravel



Legend

- Route in tunnel
- Route on surface
- Depot, station, headhouse or portal building
- Land potentially required during construction
- Community area boundary
- County boundary
- District/Borough boundary
- Watercourse
- Water body
- Woodland
- Registered park/garden
- Landfill site (historical or active)
- Geoconservation site
- Area assessed as not posing a contaminative risk in relation to the Proposed Scheme
- Area assessed as potentially posing a contaminative risk in relation to the Proposed Scheme
- Site No.
- CA No.

Petroleum Exploration and Development Licences are present within the study area, see relevant Volume 2 report for details. A Shale Prospective Area covers the entire study area.

Map Number: LQ-01-312a

Map Name: Land Quality SES1 and AP1 ES

Community Area MA03: Pickmere to Agden and Hulseheath

HS2

Registered in England. Registration number 06791686. Registered office: Two Snowhill, Snow Hill Queensway, Birmingham B4 6GA.

© Crown copyright and database rights 2021 OS 100049190

Doc Number: 2PT24-MWJ-EV-MAP-M000-001732-P01

Date: 21/04/22

Scale at A3: 1:10,000

0 100 200 300 400 Metres

This page is left intentionally blank